



E-Selectin Monoclonal Antibody

Catalog No	BYmab-10581
Isotype	IgG
Reactivity	Human;Rat;Mouse;
Applications	WB
Gene Name	SELE ELAM1
Protein Name	E-Selectin
Immunogen	The antiserum was produced against synthesized peptide derived from the N-terminal region of human SELE. AA range:100-150
Specificity	E-Selectin Monoclonal Antibody detects endogenous levels of E-Selectin
Formulation	Liquid in PBS containing 50% glycerol, 0.5% BSA and 0.02% sodium azide.
Source	Monoclonal, Mouse,IgG
Purification	The antibody was affinity-purified from mouse antiserum by affinity-chromatography using epitope-specific immunogen.
Dilution	WB 1:500-2000
Concentration	1 mg/ml
Purity	≥90%
Storage Stability	-20°C/1 year
Synonyms	selectin E
Observed Band	66kD
Cell Pathway	Cell membrane ; Single-pass type I membrane protein.
Tissue Specificity	Umbilical vein endothelial cell,
Function	function:Cell-surface glycoprotein having a role in immunoadhesion. Mediates in the adhesion of blood neutrophils in cytokine-activated endothelium through interaction with PSGL1/SELPLG. May have a role in capillary morphogenesis.,online information:E-selectin,polymorphism:A polymorphism in position 149 is associated with a higher risk of coronary artery disease (CAD). A significantly higher mutation frequency (Arg-149) is observed in patients with angiographically proven severe atherosclerosis compared with an unselected population (Ser-149).,similarity:Belongs to the selectin/LECAM family.,similarity:Contains 1 C-type lectin domain.,similarity:Contains 1 EGF-like domain.,similarity:Contains 6 Sushi (CCP/SCR) domains.,subunit:Interacts with PSGL1/SELPLG through the sialyl Lewis X epitope. PSGL1 sulfation appears not

Nanjing BYabscience technology Co.,Ltd



to be required for this interaction.,

Background

The protein encoded by this gene is found in cytokine-stimulated endothelial cells and is thought to be responsible for the accumulation of blood leukocytes at sites of inflammation by mediating the adhesion of cells to the vascular lining. It exhibits structural features such as the presence of lectin- and EGF-like domains followed by short consensus repeat (SCR) domains that contain 6 conserved cysteine residues. These proteins are part of the selectin family of cell adhesion molecules. Adhesion molecules participate in the interaction between leukocytes and the endothelium and appear to be involved in the pathogenesis of atherosclerosis. [provided by RefSeq, Jul 2008],

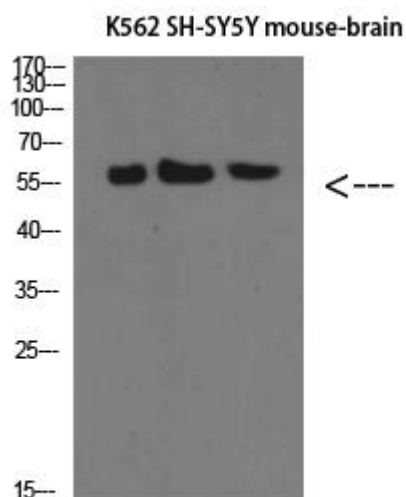
matters needing attention

Avoid repeated freezing and thawing!

Usage suggestions

This product can be used in immunological reaction related experiments. For more information, please consult technical personnel.

Products Images



Western Blot analysis of various cells using E-Selectin Monoclonal Antibody