



# BORA (Phospho-Ser497) mouse mAb

Catalog No	BYmab-10553
Isotype	IgG
Reactivity	Human; Mouse;Rat
Applications	WB
Gene Name	BORA C13orf34
Protein Name	BORA (Phospho-Ser497)
Immunogen	Synthesized peptide derived from human BORA (Phospho-Ser497)
Specificity	This antibody detects endogenous levels of BORA (Phospho-Ser497) at Human, Mouse,Rat
Formulation	Liquid in PBS containing 50% glycerol, and 0.209% sodium azide.
Source	Monoclonal, Mouse,IgG
Purification	The antibody was affinity-purified from mouse antiserum by affinity-chromatography using epitope-specific immunogen.
Dilution	WB 1:500-2000
Concentration	1 mg/ml
Purity	≥90%
Storage Stability	-20°C/1 year
Synonyms	Protein aurora borealis (HsBora)
Observed Band	
Cell Pathway	cytosol,meiotic spindle,
Tissue Specificity	Bone marrow,Leiomyosarcoma,Rhabdomyosarcoma,Small intestine,Testis carcinom
Function	function:Required for the activation of Aurora-A (AURKA/STK6) at the onset of mitosis.,PTM:Phosphorylated by AURKA/STK6.,similarity:Belongs to the BORA family.,subunit:Interacts with AURKA/STK6.,
Background	BORA is an activator of the protein kinase Aurora A (AURKA; MIM 603072), which is required for centrosome maturation, spindle assembly, and asymmetric protein localization during mitosis (Hutterer et al., 2006 [PubMed 16890155]).[supplied by OMIM, Mar 2008],
matters needing attention	Avoid repeated freezing and thawing!

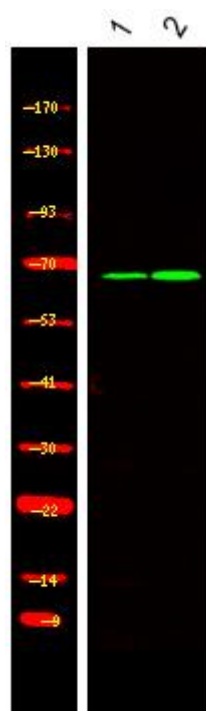
Nanjing BYabscience technology Co.,Ltd



### Usage suggestions

This product can be used in immunological reaction related experiments. For more information, please consult technical personnel.

## Products Images



Western Blot analysis of various cells using BORA (Phospho-Ser497) mouse mAb