



# BCLAF1 (Phospho-Ser531) mouse mAb

|                    |                                                                                                                                                                                                                                                                                                                                                                                                                                                                                                                  |
|--------------------|------------------------------------------------------------------------------------------------------------------------------------------------------------------------------------------------------------------------------------------------------------------------------------------------------------------------------------------------------------------------------------------------------------------------------------------------------------------------------------------------------------------|
| Catalog No         | BYmab-10552                                                                                                                                                                                                                                                                                                                                                                                                                                                                                                      |
| Isotype            | IgG                                                                                                                                                                                                                                                                                                                                                                                                                                                                                                              |
| Reactivity         | Human; Mouse;Rat                                                                                                                                                                                                                                                                                                                                                                                                                                                                                                 |
| Applications       | WB                                                                                                                                                                                                                                                                                                                                                                                                                                                                                                               |
| Gene Name          | BCLAF1 BTF KIAA0164                                                                                                                                                                                                                                                                                                                                                                                                                                                                                              |
| Protein Name       | BCLAF1 (Phospho-Ser531)                                                                                                                                                                                                                                                                                                                                                                                                                                                                                          |
| Immunogen          | Synthesized peptide derived from human BCLAF1 (Phospho-Ser531)                                                                                                                                                                                                                                                                                                                                                                                                                                                   |
| Specificity        | This antibody detects endogenous levels of BCLAF1 (Phospho-Ser531) at Human, Mouse,Rat                                                                                                                                                                                                                                                                                                                                                                                                                           |
| Formulation        | Liquid in PBS containing 50% glycerol, and 0.208% sodium azide.                                                                                                                                                                                                                                                                                                                                                                                                                                                  |
| Source             | Monoclonal, Mouse,IgG                                                                                                                                                                                                                                                                                                                                                                                                                                                                                            |
| Purification       | The antibody was affinity-purified from mouse antiserum by affinity-chromatography using epitope-specific immunogen.                                                                                                                                                                                                                                                                                                                                                                                             |
| Dilution           | WB 1:500-2000                                                                                                                                                                                                                                                                                                                                                                                                                                                                                                    |
| Concentration      | 1 mg/ml                                                                                                                                                                                                                                                                                                                                                                                                                                                                                                          |
| Purity             | ≥90%                                                                                                                                                                                                                                                                                                                                                                                                                                                                                                             |
| Storage Stability  | -20°C/1 year                                                                                                                                                                                                                                                                                                                                                                                                                                                                                                     |
| Synonyms           | Bcl-2-associated transcription factor 1 (Btf)                                                                                                                                                                                                                                                                                                                                                                                                                                                                    |
| Observed Band      |                                                                                                                                                                                                                                                                                                                                                                                                                                                                                                                  |
| Cell Pathway       | Cytoplasm. Nucleus. Nucleus speckle . Nucleus, nucleoplasm .                                                                                                                                                                                                                                                                                                                                                                                                                                                     |
| Tissue Specificity | Ubiquitous.                                                                                                                                                                                                                                                                                                                                                                                                                                                                                                      |
| Function           | function:Death-promoting transcriptional repressor.,sequence caution:Contaminating sequence. Potential poly-A sequence.,subunit:Interacts with Bcl-2 related proteins, EMD, with the adenovirus E1B 19 kDa protein and with DNA.,tissue specificity:Ubiquitous.,                                                                                                                                                                                                                                                 |
| Background         | This gene encodes a transcriptional repressor that interacts with several members of the BCL2 family of proteins. Overexpression of this protein induces apoptosis, which can be suppressed by co-expression of BCL2 proteins. The protein localizes to dot-like structures throughout the nucleus, and redistributes to a zone near the nuclear envelope in cells undergoing apoptosis. Multiple transcript variants encoding different isoforms have been found for this gene. [provided by RefSeq, Jul 2008], |

Nanjing BYabscience technology Co.,Ltd



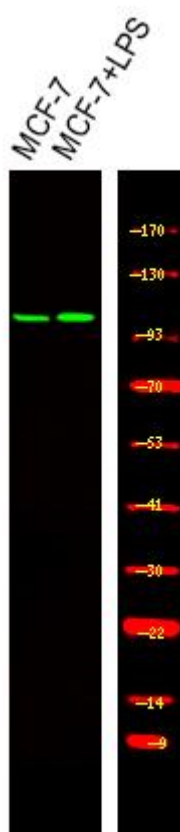
**matters needing attention**

Avoid repeated freezing and thawing!

**Usage suggestions**

This product can be used in immunological reaction related experiments. For more information, please consult technical personnel.

## Products Images



Western Blot analysis of various cells using BCLAF1 (Phospho-Ser531) mouse mAb