



# VAMP4 (Phospho-Ser30) mouse mAb

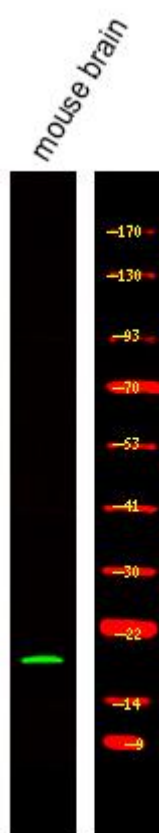
<b>Catalog No</b>	BYmab-10550
<b>Isotype</b>	IgG
<b>Reactivity</b>	Human; Mouse;Rat
<b>Applications</b>	WB
<b>Gene Name</b>	VAMP4
<b>Protein Name</b>	VAMP4 (Phospho-Ser30)
<b>Immunogen</b>	Synthesized peptide derived from human VAMP4 (Phospho-Ser30)
<b>Specificity</b>	This antibody detects endogenous levels of VAMP4 (Phospho-Ser30) at Human, Mouse,Rat
<b>Formulation</b>	Liquid in PBS containing 50% glycerol, and 0.206% sodium azide.
<b>Source</b>	Monoclonal, Mouse,IgG
<b>Purification</b>	The antibody was affinity-purified from mouse antiserum by affinity-chromatography using epitope-specific immunogen.
<b>Dilution</b>	WB 1:500-2000
<b>Concentration</b>	1 mg/ml
<b>Purity</b>	≥90%
<b>Storage Stability</b>	-20°C/1 year
<b>Synonyms</b>	Vesicle-associated membrane protein 4 (VAMP-4)
<b>Observed Band</b>	17kD
<b>Cell Pathway</b>	Golgi apparatus, trans-Golgi network membrane ; Single-pass type IV membrane protein . Associated with trans Golgi network (TGN) and newly formed immature secretory granules (ISG). Not found on the mature secretory organelles.
<b>Tissue Specificity</b>	B-cell,Bone marrow,Epithelium,Liver,Urinary bladder,
<b>Function</b>	function:Involved in the pathway that functions to remove an inhibitor (probably synaptotagmin-4) of calcium-triggered exocytosis during the maturation of secretory granules. May be a marker for this sorting pathway that is critical for remodeling the secretory response of granule.,similarity:Belongs to the synaptobrevin family.,similarity:Contains 1 v-SNARE coiled-coil homology domain.,subcellular location:Associated with trans Golgi network (TGN) and newly formed immature secretory granules (ISG). Not found on the mature secretory organelles.,subunit:Identified in a complex containing STX6, STX13, VAMP4 and VT11A.,

**Nanjing BYabscience technology Co.,Ltd**



<b>Background</b>	Synaptobrevins/VAMPs, syntaxins, and the 25-kD synaptosomal-associated protein SNAP25 are the main components of a protein complex involved in the docking and/or fusion of synaptic vesicles with the presynaptic membrane. The protein encoded by this gene is a member of the vesicle-associated membrane protein (VAMP)/synaptobrevin family. This protein may play a role in trans-Golgi network-to-endosome transport. [provided by RefSeq, Jul 2008],
<b>matters needing attention</b>	Avoid repeated freezing and thawing!
<b>Usage suggestions</b>	This product can be used in immunological reaction related experiments. For more information, please consult technical personnel.

## Products Images



Western Blot analysis of various cells using VAMP4 (Phospho-Ser30) mouse mAb