



# MAP3K2 (Phospho-Ser520) mouse mAb

Catalog No	BYmab-10475
Isotype	IgG
Reactivity	Human; Mouse;Rat
Applications	WB
Gene Name	MAP3K2 MAPKKK2 MEKK2
Protein Name	MAP3K2 (Phospho-Ser520)
Immunogen	Synthesized peptide derived from human MAP3K2 (Phospho-Ser520)
Specificity	This antibody detects endogenous levels of MAP3K2 (Phospho-Ser520) at Human, Mouse,Rat
Formulation	Liquid in PBS containing 50% glycerol, and 0.130% sodium azide.
Source	Monoclonal, Mouse,IgG
Purification	The antibody was affinity-purified from mouse antiserum by affinity-chromatography using epitope-specific immunogen.
Dilution	WB 1:500-2000
Concentration	1 mg/ml
Purity	≥90%
Storage Stability	-20°C/1 year
Synonyms	Mitogen-activated protein kinase kinase kinase 2 (EC 2.7.11.25) (MAPK/ERK kinase kinase 2) (MEK kinase 2) (MEKK 2)
Observed Band	
Cell Pathway	Cytoplasm . Nucleus . Upon EGF stimulation, translocates into the nucleus.
Tissue Specificity	Brain,Platelet,T-cell,Teratocarcinoma,Whole embryo,
Function	catalytic activity:ATP + a protein = ADP + a phosphoprotein.,cofactor:Magnesium.,enzyme regulation:Activated by phosphorylation on Thr-524.,function:Component of a protein kinase signal transduction cascade. Regulates the JNK and ERK5 pathways by phosphorylating and activating MAP2K5 and MAP2K7 (By similarity). Plays a role in caveolae kiss-and-run dynamics.,PTM:Autophosphorylated.,similarity:Belongs to the protein kinase superfamily. STE Ser/Thr protein kinase family. MAP kinase kinase kinase subfamily.,similarity:Contains 1 OPR domain.,similarity:Contains 1 protein kinase domain.,subcellular location:Upon EGF stimulation, translocates into the nucleus.,subunit:Bounds both upstream activators and downstream substrates in multimolecular complexes.,

Nanjing BYabscience technology Co.,Ltd



## Background

The protein encoded by this gene is a member of serine/threonine protein kinase family. This kinase preferentially activates other kinases involved in the MAP kinase signaling pathway. This kinase has been shown to directly phosphorylate and activate Ikappa B kinases, and thus plays a role in NF-kappa B signaling pathway. This kinase has also been found to bind and activate protein kinase C-related kinase 2, which suggests its involvement in a regulated signaling process. [provided by RefSeq, Jul 2008],

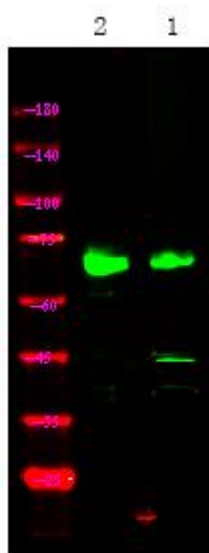
## matters needing attention

Avoid repeated freezing and thawing!

## Usage suggestions

This product can be used in immunological reaction related experiments. For more information, please consult technical personnel.

## Products Images



Western Blot analysis of various cells using MAP3K2 (Phospho-Ser520) mouse mAb