



IRF5 (Phospho-Ser437) mouse mAb

Catalog No	BYmab-10438
Isotype	IgG
Reactivity	Human; Mouse;Rat
Applications	WB
Gene Name	IRF5
Protein Name	IRF5 (Phospho-Ser437)
Immunogen	Synthesized peptide derived from human IRF5 (Phospho-Ser437)
Specificity	This antibody detects endogenous levels of IRF5 (Phospho-Ser437) at Human, Mouse,Rat
Formulation	Liquid in PBS containing 50% glycerol, and 0.87% sodium azide.
Source	Monoclonal, Mouse,IgG
Purification	The antibody was affinity-purified from mouse antiserum by affinity-chromatography using epitope-specific immunogen.
Dilution	WB 1:500-2000
Concentration	1 mg/ml
Purity	≥90%
Storage Stability	-20°C/1 year
Synonyms	Interferon regulatory factor 5 (IRF-5)
Observed Band	
Cell Pathway	Cytoplasm . Nucleus . Shuttles between the nucleus and the cytoplasm: upon activation by the TLR adapter MYD88 and subsequent phosphorylation, translocates to the nucleus. .
Tissue Specificity	Kidney,
Function	disease:Genetic variations in IRF5 are associated with susceptibility to inflammatory bowel disease type 14 (IBD14) [MIM:612245]. Inflammatory bowel disease (IBD) is a form of remitting Crohn disease (CD). CD may involve any part of the gastrointestinal tract, but most frequently the terminal ileum and colon. Bowel inflammation is transmural and discontinuous. CD is commonly classified as an autoimmune disease.,disease:Genetic variations in IRF5 are associated with susceptibility to rheumatoid arthritis (RA) [MIM:180300]. Rheumatoid arthritis is a complex, multifactorial disorder. It is one of the most common autoimmune diseases and it is characterized by inflammation of synovial tissue and joint destruction.,disease:Genetic variations in IRF5 are associated with susceptibility

Nanjing BYabscience technology Co.,Ltd



to systemic lupus erythematosus type 10 (SLEB10) [MIM:612251]. Systemic lupus erythematosus (SLE) is a chronic,

Background

This gene encodes a member of the interferon regulatory factor (IRF) family, a group of transcription factors with diverse roles, including virus-mediated activation of interferon, and modulation of cell growth, differentiation, apoptosis, and immune system activity. Members of the IRF family are characterized by a conserved N-terminal DNA-binding domain containing tryptophan (W) repeats. Multiple transcript variants encoding different isoforms have been found for this gene, and a 30-nt indel polymorphism (SNP rs60344245) can result in loss of a 10-aa segment. [provided by RefSeq, Mar 2010],

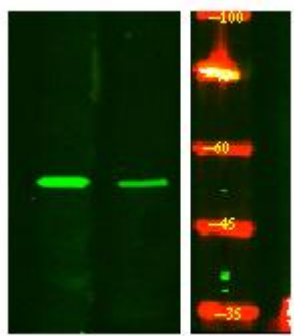
matters needing attention

Avoid repeated freezing and thawing!

Usage suggestions

This product can be used in immunological reaction related experiments. For more information, please consult technical personnel.

Products Images



Western Blot analysis of various cells using IRF5 (Phospho-Ser437) mouse mAb