



# Rac1/CDC42 (Phospho Ser71) mouse mAb

<b>Catalog No</b>	BYmab-10429
<b>Isotype</b>	IgG
<b>Reactivity</b>	Human;Mouse;Rat
<b>Applications</b>	WB
<b>Gene Name</b>	RAC1 TC25 MIG5
<b>Protein Name</b>	Rac1/CDC42 (Phospho Ser71)
<b>Immunogen</b>	Synthesized peptide derived from human Rac1/CDC42 (Phospho Ser71)
<b>Specificity</b>	This antibody detects endogenous levels of Human,Mouse,Rat Rac1/CDC42 (Phospho Ser71)
<b>Formulation</b>	Liquid in PBS containing 50% glycerol, 0.5% BSA and 0.02% sodium azide.
<b>Source</b>	Monoclonal, Mouse,IgG
<b>Purification</b>	The antibody was affinity-purified from mouse antiserum by affinity-chromatography using epitope-specific immunogen.
<b>Dilution</b>	WB 1:500-2000
<b>Concentration</b>	1 mg/ml
<b>Purity</b>	≥90%
<b>Storage Stability</b>	-20°C/1 year
<b>Synonyms</b>	Ras-related C3 botulinum toxin substrate 1 (Cell migration-inducing gene 5 protein;Ras-like protein TC25;p21-Rac1)
<b>Observed Band</b>	
<b>Cell Pathway</b>	Cell membrane ; Lipid-anchor ; Cytoplasmic side . Melanosome . Cytoplasm . Cell projection, lamellipodium . Cell projection, dendrite . Cell junction, synapse . Nucleus . Inner surface of plasma membrane possibly with attachment requiring prenylation of the C-terminal cysteine (PubMed:1903399). Identified by mass spectrometry in melanosome fractions from stage I to stage IV (PubMed:17081065). Found in the ruffled border (a late endosomal-like compartment in the plasma membrane) of bone-resorbing osteoclasts. Localizes to the lamellipodium in a SH3RF1-dependent manner (By similarity). In macrophages, cytoplasmic location increases upon CSF1 stimulation (By similarity). Activation by GTP-binding promotes nuclear localization (PubMed:12551911). .
<b>Tissue Specificity</b>	Isoform B is predominantly identified in skin and epithelial tissues from the intestinal tract. Its expression is elevated in colorectal tumors at various stages of neoplastic progression, as compared to their respective adjacent tissues.

**Nanjing BYabscience technology Co.,Ltd**



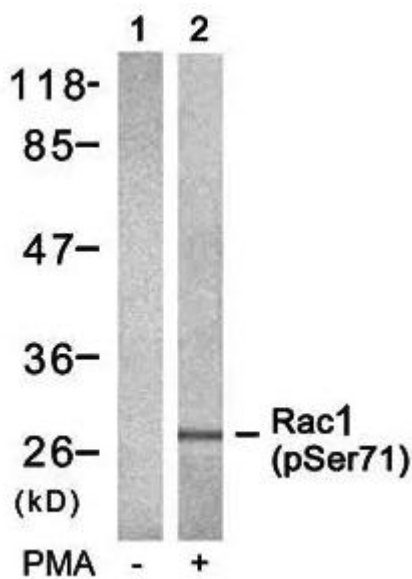
## Function

## Background

**matters needing attention** Avoid repeated freezing and thawing!

**Usage suggestions** This product can be used in immunological reaction related experiments. For more information, please consult technical personnel.

## Products Images



Western Blot analysis of various cells using Rac1/CDC42 (Phospho Ser71) mouse mAb

Nanjing BYabscience technology Co.,Ltd

网址: [www.njbybio.com](http://www.njbybio.com)

官方热线: 025-5229-8998

监督电话: 15950492658