



# ROS1 (phospho-Tyr2274) mouse mAb

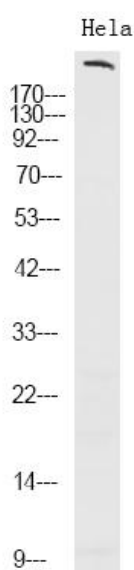
Catalog No	BYmab-10402
Isotype	IgG
Reactivity	Human;Rat;Mouse;
Applications	WB
Gene Name	ROS1 MCF3 ROS
Protein Name	ROS1 (Tyr2274)
Immunogen	Synthesized phosho peptide around human ROS1 (Tyr2274)
Specificity	This antibody detects endogenous levels of Human ROS1 (phospho-Tyr2274)
Formulation	Liquid in PBS containing 50% glycerol, 0.5% BSA and 0.02% sodium azide.
Source	Monoclonal, Mouse,IgG
Purification	The antibody was affinity-purified from mouse antiserum by affinity-chromatography using epitope-specific immunogen.
Dilution	WB 1:500-2000
Concentration	1 mg/ml
Purity	≥90%
Storage Stability	-20°C/1 year
Synonyms	Proto-oncogene tyrosine-protein kinase ROS (EC 2.7.10.1) (Proto-oncogene c-Ros) (Proto-oncogene c-Ros-1) (Receptor tyrosine kinase c-ros oncogene 1) (c-Ros receptor tyrosine kinase)
Observed Band	258kD
Cell Pathway	Cell membrane ; Single-pass type I membrane protein .
Tissue Specificity	Expressed in brain. Expression is increased in primary gliomas.
Function	catalytic activity:ATP + a [protein]-L-tyrosine = ADP + a [protein]-L-tyrosine phosphate.,disease:A chromosomal aberration involving ROS1 is found in glioblastoma multiform (GBM). An homozygous deletion in chromosome 6q21 results in expression of a GOPC-ROS1 chimeric protein which has a constitutive receptor tyrosine kinase activity.,function:This is probably a cell growth or differentiation factor receptor with a tyrosine-protein kinase activity.,similarity:Belongs to the protein kinase superfamily. Tyr protein kinase family. Insulin receptor subfamily.,similarity:Contains 1 protein kinase domain.,similarity:Contains 9 fibronectin type-III domains.,

Nanjing BYabscience technology Co.,Ltd



<b>Background</b>	This proto-oncogene, highly-expressed in a variety of tumor cell lines, belongs to the sevenless subfamily of tyrosine kinase insulin receptor genes. The protein encoded by this gene is a type I integral membrane protein with tyrosine kinase activity. The protein may function as a growth or differentiation factor receptor. [provided by RefSeq, Jul 2008],
<b>matters needing attention</b>	Avoid repeated freezing and thawing!
<b>Usage suggestions</b>	This product can be used in immunological reaction related experiments. For more information, please consult technical personnel.

## Products Images



Western Blot analysis of various cells using ROS1 (phospho-Tyr2274) mouse mAb