



# PI3 Kinase Class III (phospho-Ser249) mouse mAb

<b>Catalog No</b>	BYmab-10390
<b>Isotype</b>	IgG
<b>Reactivity</b>	Human;Rat;Mouse;
<b>Applications</b>	WB
<b>Gene Name</b>	PIK3C3 VPS34
<b>Protein Name</b>	PI3 Kinase Class III (Ser249)
<b>Immunogen</b>	Synthesized phosho peptide around human PI3 Kinase Class III (Ser249)
<b>Specificity</b>	This antibody detects endogenous levels of Human PI3 Kinase Class III (phospho-Ser249)
<b>Formulation</b>	Liquid in PBS containing 50% glycerol, 0.5% BSA and 0.02% sodium azide.
<b>Source</b>	Monoclonal, Mouse,IgG
<b>Purification</b>	The antibody was affinity-purified from mouse antiserum by affinity-chromatography using epitope-specific immunogen.
<b>Dilution</b>	WB 1:500-2000
<b>Concentration</b>	1 mg/ml
<b>Purity</b>	≥90%
<b>Storage Stability</b>	-20°C/1 year
<b>Synonyms</b>	Phosphatidylinositol 3-kinase catalytic subunit type 3 (PI3-kinase type 3) (PI3K type 3) (PtdIns-3-kinase type 3) (EC 2.7.1.137) (Phosphatidylinositol 3-kinase p100 subunit) (Phosphoinositide-3-kinase class 3) (hVps34)
<b>Observed Band</b>	100kD
<b>Cell Pathway</b>	Midbody . Late endosome . Cytoplasmic vesicle, autophagosome . As component of the PI3K complex I localized to pre-autophagosome structures. As component of the PI3K complex II localized predominantly to endosomes (PubMed:14617358). Localizes also to discrete punctae along the ciliary axoneme and to the base of the ciliary axoneme (By similarity). .
<b>Tissue Specificity</b>	Ubiquitously expressed, with a highest expression in skeletal muscle.
<b>Function</b>	catalytic activity:ATP + 1-phosphatidyl-1D-myo-inositol = ADP + 1-phosphatidyl-1D-myo-inositol 3-phosphate.,cofactor:Manganese.,function:Catalytic subunit of the PI3K complex. Involved in the transport of lysosomal enzyme precursors to lysosomes.,similarity:Belongs to the PI3/PI4-kinase family.,similarity:Contains 1 PI3K/PI4K domain.,subunit:Probably forms a complex with AMBRA1 and BECN1

**Nanjing BYabscience technology Co.,Ltd**



(By similarity). Heterodimer. This subunit, part of a complex composed of regulatory and catalytic subunits, associates with regulatory subunit PIK3R4. tissue specificity: Ubiquitously expressed, with a highest expression in skeletal muscle.,

## Background

### matters needing attention

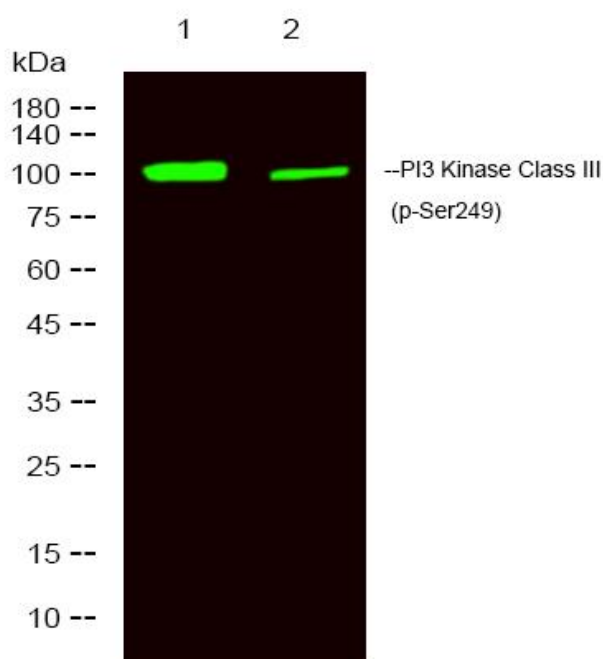
Avoid repeated freezing and thawing!

### Usage suggestions

This product can be used in immunological reaction related experiments. For more information, please consult technical personnel.

## Products Images

Western Blot analysis of various cells using PI3 Kinase Class III (phospho-Ser249) mouse mAb



Nanjing BYabscience technology Co.,Ltd

网址: [www.njbybio.com](http://www.njbybio.com)

官方热线: 025-5229-8998

监督电话: 15950492658