



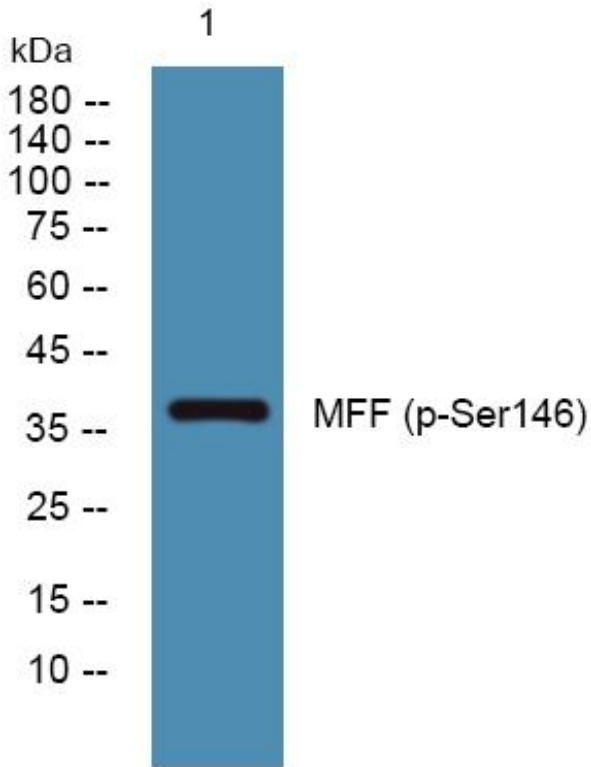
# MFF (phospho-Ser146) mouse mAb

|                           |   |
|---------------------------|---|
| Catalog No                | BYmab-10380   |
| Isotype                   | IgG   |
| Reactivity                | Human;Mouse;Rat   |
| Applications              | WB  |
| Gene Name                 |   |
| Protein Name              | MFF (Ser146)  |
| Immunogen                 | Synthesized phosho peptide around human MFF (Ser146)  |
| Specificity               | This antibody detects endogenous levels of Human Mouse Rat MFF (phospho-Ser146)   |
| Formulation               | Liquid in PBS containing 50% glycerol, 0.5% BSA and 0.02% sodium azide.   |
| Source                    | Monoclonal, Mouse,IgG   |
| Purification              | The antibody was affinity-purified from mouse antiserum by affinity-chromatography using epitope-specific immunogen.                          |
| Dilution                  | WB 1:500-2000   |
| Concentration             | 1 mg/ml   |
| Purity                    | ≥90%  |
| Storage Stability         | -20°C/1 year  |
| Synonyms                  | Mitochondrial fission factor  |
| Observed Band             | 37kD  |
| Cell Pathway              | Mitochondrion outer membrane ; Single-pass type IV membrane protein . Peroxisome . Cytoplasmic vesicle, secretory vesicle, synaptic vesicle . |
| Tissue Specificity        | Highly expressed in heart, kidney, liver, brain, muscle, and stomach.   |
| Function                  |   |
| Background                |   |
| matters needing attention | Avoid repeated freezing and thawing!  |
| Usage suggestions         | This product can be used in immunological reaction related experiments. For more information, please consult technical personnel.             |

Nanjing BYabscience technology Co.,Ltd



## Products Images



Western Blot analysis of various cells using MFF  
(phospho-Ser146) mouse mAb