



# EPHA1 (Phospho-Tyr605) Monoclonal Antibody

Catalog No	BYmab-10338
Isotype	IgG
Reactivity	Human; Mouse
Applications	WB
Gene Name	EPHA1 EPH EPHT EPHT1
Protein Name	EPHA1 (Phospho-Tyr605)
Immunogen	Synthesized peptide derived from human EPHA1 (Phospho-Tyr605)
Specificity	This antibody detects endogenous phospho levels of EPHA1 (Phospho-Tyr605) at Human:Y605, Mouse:Y606
Formulation	Liquid in PBS containing 50% glycerol, 0.5% BSA and 0.02% sodium azide.
Source	Monoclonal, Mouse,IgG
Purification	The antibody was affinity-purified from mouse antiserum by affinity-chromatography using epitope-specific immunogen.
Dilution	WB 1:500-2000
Concentration	1 mg/ml
Purity	≥90%
Storage Stability	-20°C/1 year
Synonyms	Ephrin type-A receptor 1 (hEpha1;EC 2.7.10.1;EPH tyrosine kinase;EPH tyrosine kinase 1;Erythropoietin-producing hepatoma receptor;Tyrosine-protein kinase receptor EPH)
Observed Band	108kD
Cell Pathway	Cell membrane ; Single-pass type I membrane protein .
Tissue Specificity	Overexpressed in several carcinomas.
Function	catalytic activity:ATP + a [protein]-L-tyrosine = ADP + a [protein]-L-tyrosine phosphate.,function:Receptor for members of the ephrin-A family. Binds with a low affinity to ephrin-A1.,similarity:Belongs to the protein kinase superfamily. Tyr protein kinase family.,similarity:Belongs to the protein kinase superfamily. Tyr protein kinase family. Ephrin receptor subfamily.,similarity:Contains 1 protein kinase domain.,similarity:Contains 1 SAM (sterile alpha motif) domain.,similarity:Contains 2 fibronectin type-III domains.,tissue specificity:Overexpressed in several carcinomas.,

Nanjing BYabscience technology Co.,Ltd



## Background

This gene belongs to the ephrin receptor subfamily of the protein-tyrosine kinase family. EPH and EPH-related receptors have been implicated in mediating developmental events, particularly in the nervous system. Receptors in the EPH subfamily typically have a single kinase domain and an extracellular region containing a Cys-rich domain and 2 fibronectin type III repeats. The ephrin receptors are divided into 2 groups based on the similarity of their extracellular domain sequences and their affinities for binding ephrin-A and ephrin-B ligands. This gene is expressed in some human cancer cell lines and has been implicated in carcinogenesis. [provided by RefSeq, Jul 2008],

## matters needing attention

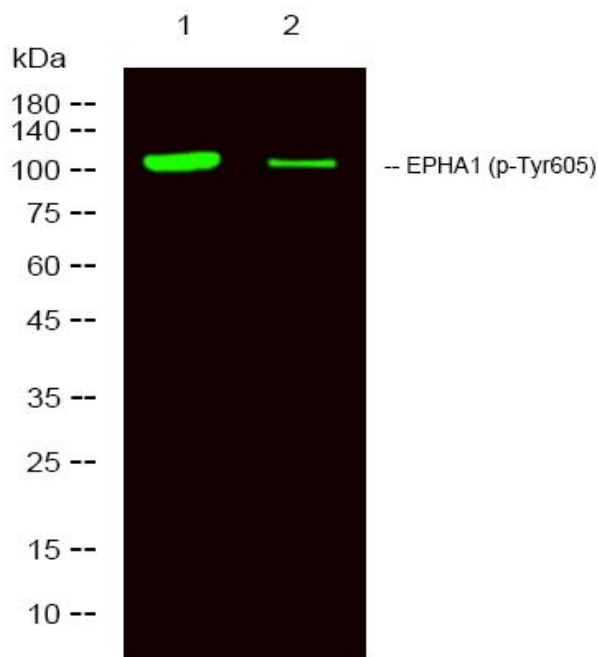
Avoid repeated freezing and thawing!

## Usage suggestions

This product can be used in immunological reaction related experiments. For more information, please consult technical personnel.

## Products Images

Western Blot analysis of various cells using EPHA1 (Phospho-Tyr605) Monoclonal Antibody



Nanjing BYabs science technology Co.,Ltd

网址: [www.njbybio.com](http://www.njbybio.com)

官方热线: 025-5229-8998

监督电话: 15950492658