



# ASH1L mouse mAb

Catalog No	BYmab-09700
Isotype	IgG
Reactivity	Human;Mouse
Applications	WB
Gene Name	ASH1L KIAA1420 KMT2H
Protein Name	Histone-lysine N-methyltransferase ASH1L (EC 2.1.1.43) (ASH1-like protein) (huASH1) (Absent small and homeotic disks protein 1 homolog) (Lysine N-methyltransferase 2H)
Immunogen	Synthesized peptide derived from human ASH1L AA range: 1323-1373
Specificity	This antibody detects endogenous levels of human ASH1L
Formulation	Liquid in PBS containing 50% glycerol, 0.5% BSA and 0.02% sodium azide.
Source	Monoclonal, Mouse,IgG
Purification	The antibody was affinity-purified from mouse antiserum by affinity-chromatography using epitope-specific immunogen.
Dilution	WB 1:500-2000
Concentration	1 mg/ml
Purity	≥90%
Storage Stability	-20°C/1 year
Synonyms	
Observed Band	
Cell Pathway	Nucleus . Cell junction, tight junction . Chromosome . The relevance of tight junction localization is however unclear. .
Tissue Specificity	Widely expressed, with highest level in brain, heart and kidney.
Function	
Background	
matters needing attention	Avoid repeated freezing and thawing!

Nanjing BYabscience technology Co.,Ltd

网址: [www.njbybio.com](http://www.njbybio.com)

官方热线: 025-5229-8998

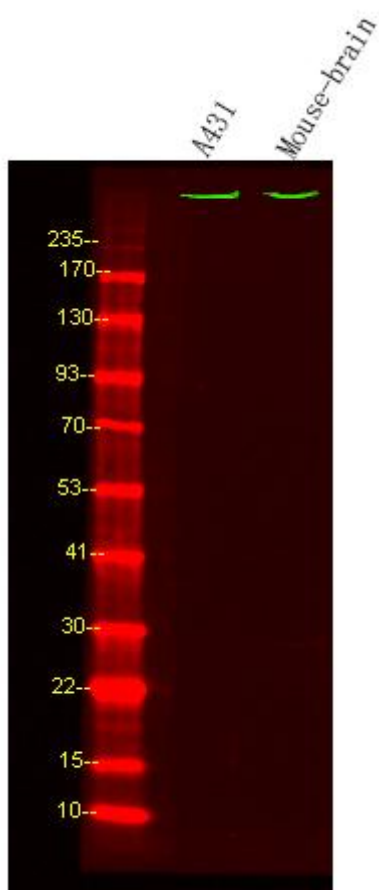
监督电话: 15950492658



### Usage suggestions

This product can be used in immunological reaction related experiments. For more information, please consult technical personnel.

## Products Images



Western Blot analysis of various cells using ASH1L mouse mAb