



ASGL1 mouse mAb

Catalog No	BYmab-09177
Isotype	IgG
Reactivity	Human; Mouse;Rat
Applications	WB
Gene Name	ASRGL1 ALP CRASH
Protein Name	ASGL1
Immunogen	Synthesized peptide derived from human ASGL1 AA range: 57-107
Specificity	This antibody detects endogenous levels of ASGL1 at Human/Mouse/Rat
Formulation	Liquid in PBS containing 50% glycerol, 0.5% BSA and 0.02% sodium azide.
Source	Monoclonal, Mouse,IgG
Purification	The antibody was affinity-purified from mouse antiserum by affinity-chromatography using epitope-specific immunogen.
Dilution	WB 1:500-2000
Concentration	1 mg/ml
Purity	≥90%
Storage Stability	-20°C/1 year
Synonyms	
Observed Band	
Cell Pathway	Cytoplasm . Midpiece of sperm tail.
Tissue Specificity	Expressed in brain, kidney, testis and tissues of the gastrointestinal tract. Present in sperm (at protein level). Over-expressed in uterine, mammary, prostatic and ovarian carcinoma.
Function	catalytic activity:L-asparagine + H(2)O = L-aspartate + NH(3).,function:Acts in asparagine catabolism. May be involved in astroglial production of L-aspartate, which can act as an excitatory neurotransmitter in some brain regions.,induction:By 5-alpha-di-hydrotestosterone and progesterone.,similarity:Belongs to the Ntn-hydrolase family.,subcellular location:Midpiece of sperm tail.,tissue specificity:Expressed in brain, kidney, testis and tissues of the gastrointestinal tract. Present in sperm (at protein level). Over-expressed in uterine, mammary, prostatic and ovarian carcinoma.,
Background	

Nanjing BYabscience technology Co.,Ltd



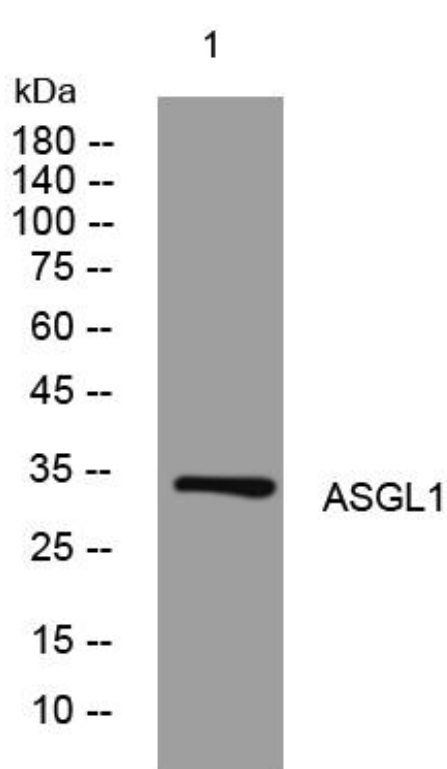
matters needing attention

Avoid repeated freezing and thawing!

Usage suggestions

This product can be used in immunological reaction related experiments. For more information, please consult technical personnel.

Products Images



Western Blot analysis of various cells using ASGL1 mouse mAb

Nanjing BYabs science technology Co.,Ltd

网址: www.njbybio.com

官方热线: 025-5229-8998

监督电话: 15950492658