



WDR82 mouse mAb

Catalog No	BYmab-09171
Isotype	IgG
Reactivity	Human; Mouse
Applications	WB
Gene Name	WDR82 WDR82A UNQ9342/PRO34047
Protein Name	WDR82
Immunogen	Synthesized peptide derived from human WDR82 AA range: 219-269
Specificity	This antibody detects endogenous levels of WDR82 at Human/Mouse
Formulation	Liquid in PBS containing 50% glycerol, 0.5% BSA and 0.02% sodium azide.
Source	Monoclonal, Mouse,IgG
Purification	The antibody was affinity-purified from mouse antiserum by affinity-chromatography using epitope-specific immunogen.
Dilution	WB 1:500-2000
Concentration	1 mg/ml
Purity	≥90%
Storage Stability	-20°C/1 year
Synonyms	
Observed Band	
Cell Pathway	Nucleus . Chromosome . Associates with chromatin (PubMed:20516061). Recruited at sites of high RNA polymerase II occupancy (By similarity). .
Tissue Specificity	
Function	caution:The gene encoding this protein shares one overlapping exon with TMEM113.,function:Component of the Set1/Ash2 histone methyltransferase (HMT) complex, a complex that specifically methylates 'Lys-4' of histone H3.,similarity:Belongs to the WD repeat SWD2 family.,similarity:Contains 6 WD repeats.,subunit:Interacts with CUL4B. Component of the SET1 complex, at least composed of the catalytic subunit (SETD1A or SETD1B), WDR5, WDR82, RBBP5, ASH2/ASH2L and CXXC1/CFP1.,
Background	TMEM113 (WDR82) is a component of the mammalian SET1A (MIM 611052)/SET1B (MIM 611055) histone H3-Lys4 methyltransferase complexes (Lee and Skalnik, 2005 [PubMed 16253997]; Lee et al., 2007 [PubMed 17355966]).[supplied by OMIM, Jul 2010],

Nanjing BYabscience technology Co.,Ltd



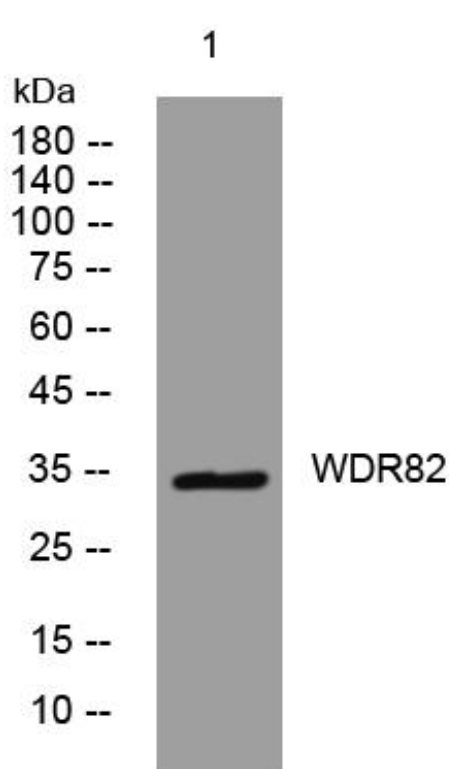
matters needing attention

Avoid repeated freezing and thawing!

Usage suggestions

This product can be used in immunological reaction related experiments. For more information, please consult technical personnel.

Products Images



Western Blot analysis of various cells using WDR82 mouse mAb