



STX18 mouse mAb

Catalog No	BYmab-09170
Isotype	IgG
Reactivity	Human; Mouse;Rat
Applications	WB
Gene Name	STX18 GIG9
Protein Name	STX18
Immunogen	Synthesized peptide derived from human STX18 AA range: 182-232
Specificity	This antibody detects endogenous levels of STX18 at Human/Mouse/Rat
Formulation	Liquid in PBS containing 50% glycerol, 0.5% BSA and 0.02% sodium azide.
Source	Monoclonal, Mouse,IgG
Purification	The antibody was affinity-purified from mouse antiserum by affinity-chromatography using epitope-specific immunogen.
Dilution	WB 1:500-2000
Concentration	1 mg/ml
Purity	≥90%
Storage Stability	-20°C/1 year
Synonyms	
Observed Band	
Cell Pathway	Endoplasmic reticulum membrane ; Single-pass type IV membrane protein . Golgi apparatus membrane ; Single-pass type IV membrane protein .
Tissue Specificity	Ubiquitous.
Function	function:Syntaxin that may be involved in targeting and fusion of Golgi-derived retrograde transport vesicles with the ER.,similarity:Belongs to the syntaxin family.,similarity:Contains 1 t-SNARE coiled-coil homology domain.,subunit:Component of a SNARE complex consisting of STX18, USE1L, BNIP1/SEC20L, and SEC22B. RINT1/TIP20L and ZW10 are associated with the complex through interaction with BNIP1/SEC20L. Interacts directly with USE1L and BNIP1/SEC20L.,tissue specificity:Ubiquitous.,
Background	

Nanjing BYabscience technology Co.,Ltd

网址: www.njbybio.com

官方热线: 025-5229-8998

监督电话: 15950492658



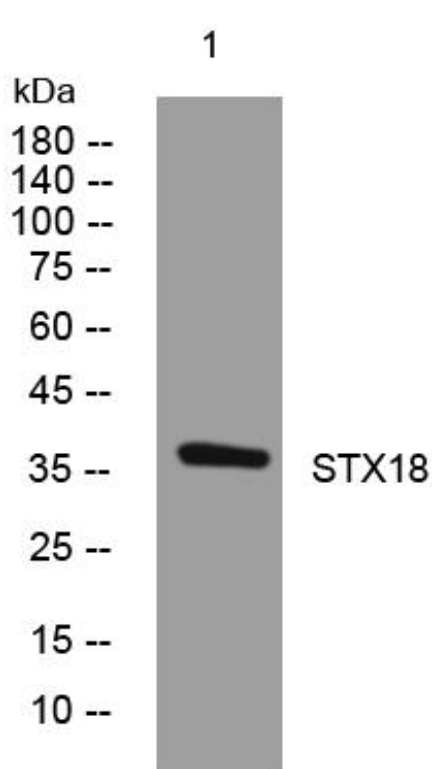
matters needing attention

Avoid repeated freezing and thawing!

Usage suggestions

This product can be used in immunological reaction related experiments. For more information, please consult technical personnel.

Products Images



Western Blot analysis of various cells using STX18 mouse mAb