



F16A1 mouse mAb

Catalog No	BYmab-09162
Isotype	IgG
Reactivity	Human; Mouse
Applications	WB
Gene Name	FAM160A1
Protein Name	F16A1
Immunogen	Synthesized peptide derived from human F16A1 AA range: 182-232
Specificity	This antibody detects endogenous levels of F16A1 at Human/Mouse
Formulation	Liquid in PBS containing 50% glycerol, 0.5% BSA and 0.02% sodium azide.
Source	Monoclonal, Mouse,IgG
Purification	The antibody was affinity-purified from mouse antiserum by affinity-chromatography using epitope-specific immunogen.
Dilution	WB 1:500-2000
Concentration	1 mg/ml
Purity	≥90%
Storage Stability	-20°C/1 year
Synonyms	
Observed Band	
Cell Pathway	
Tissue Specificity	
Function	sequence caution:Contaminating sequence. Potential poly-A sequence.,sequence caution:Translation N-terminally extended.,similarity:Belongs to the UPF0518 family.,
Background	
matters needing attention	Avoid repeated freezing and thawing!

Nanjing BYabscience technology Co.,Ltd

网址: www.njbybio.com

官方热线: 025-5229-8998

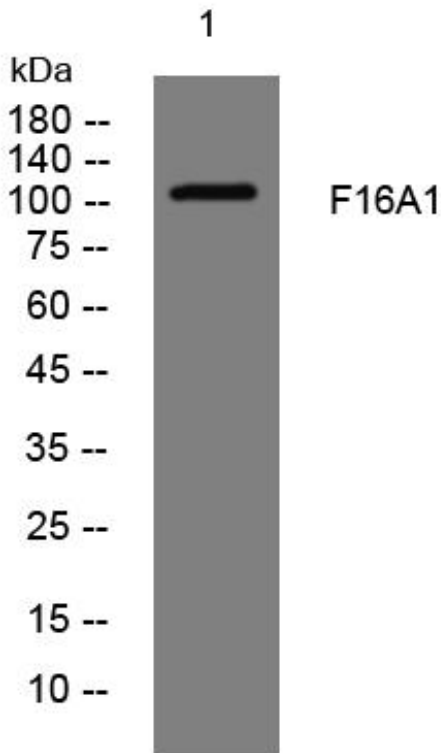
监督电话: 15950492658



Usage suggestions

This product can be used in immunological reaction related experiments. For more information, please consult technical personnel.

Products Images



Western Blot analysis of various cells using F16A1 mouse mAb

Nanjing BYabscience technology Co.,Ltd

网址: www.njbybio.com

官方热线: 025-5229-8998

监督电话: 15950492658