



CJ076 mouse mAb

Catalog No	BYmab-09161
Isotype	IgG
Reactivity	Human; Mouse
Applications	WB
Gene Name	C10orf76
Protein Name	CJ076
Immunogen	Synthesized peptide derived from human CJ076 AA range: 135-185
Specificity	This antibody detects endogenous levels of CJ076 at Human/Mouse
Formulation	Liquid in PBS containing 50% glycerol, 0.5% BSA and 0.02% sodium azide.
Source	Monoclonal, Mouse,IgG
Purification	The antibody was affinity-purified from mouse antiserum by affinity-chromatography using epitope-specific immunogen.
Dilution	WB 1:500-2000
Concentration	1 mg/ml
Purity	≥90%
Storage Stability	-20°C/1 year
Synonyms	
Observed Band	
Cell Pathway	Golgi apparatus membrane ; Single-pass membrane protein . Cytoplasm . The majority of ARMD3 is cytosolic, with a portion colocalizing with GBF1 at juxtannuclear Golgi sites. .
Tissue Specificity	
Function	similarity:Belongs to the UPF0668 family.,
Background	
matters needing attention	Avoid repeated freezing and thawing!

Nanjing BYabscience technology Co.,Ltd

网址: www.njbybio.com

官方热线: 025-5229-8998

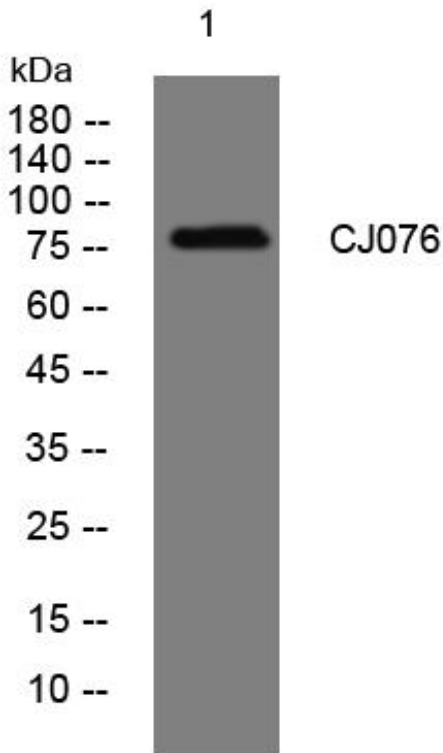
监督电话: 15950492658



Usage suggestions

This product can be used in immunological reaction related experiments. For more information, please consult technical personnel.

Products Images



Western Blot analysis of various cells using CJ076 mouse mAb

Nanjing BYabs science technology Co.,Ltd

网址: www.njbybio.com

官方热线: 025-5229-8998

监督电话: 15950492658