



# LUC7L mouse mAb

Catalog No	BYmab-09158
Isotype	IgG
Reactivity	Human; Mouse
Applications	WB
Gene Name	LUC7L LUC7L1
Protein Name	LUC7L
Immunogen	Synthesized peptide derived from human LUC7L AA range: 43-93
Specificity	This antibody detects endogenous levels of LUC7L at Human/Mouse
Formulation	Liquid in PBS containing 50% glycerol, 0.5% BSA and 0.02% sodium azide.
Source	Monoclonal, Mouse,IgG
Purification	The antibody was affinity-purified from mouse antiserum by affinity-chromatography using epitope-specific immunogen.
Dilution	WB 1:500-2000
Concentration	1 mg/ml
Purity	≥90%
Storage Stability	-20°C/1 year
Synonyms	
Observed Band	
Cell Pathway	U1 snRNP,U2-type prespliceosome,
Tissue Specificity	Ubiquitous.
Function	function:May bind to RNA via its Arg/Ser-rich domain.,similarity:Belongs to the Luc7 family.,similarity:Contains 1 C2H2-type zinc finger.,tissue specificity:Ubiquitous.,
Background	The LUC7L gene may represent a mammalian heterochromatic gene, encoding a putative RNA-binding protein similar to the yeast Luc7p subunit of the U1 snRNP splicing complex that is normally required for 5-prime splice site selection (Tufarelli et al., 2001 [PubMed 11170747]).[supplied by OMIM, Mar 2008],
matters needing attention	Avoid repeated freezing and thawing!

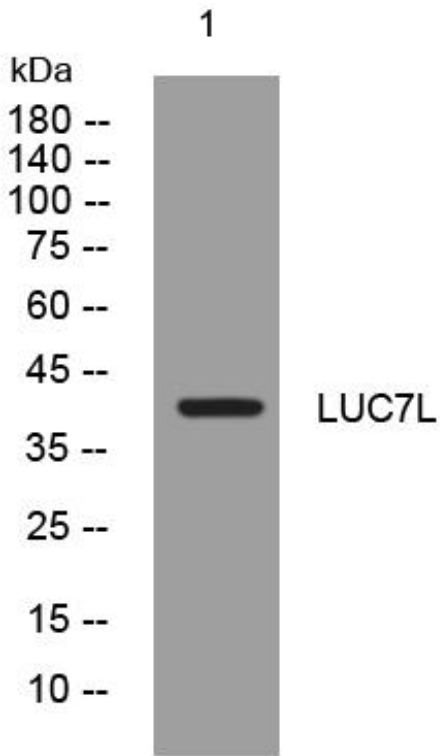
Nanjing BYabscience technology Co.,Ltd



### Usage suggestions

This product can be used in immunological reaction related experiments. For more information, please consult technical personnel.

## Products Images



Western Blot analysis of various cells using LUC7L mouse mAb

Nanjing BYabscience technology Co.,Ltd

网址: [www.njbybio.com](http://www.njbybio.com)

官方热线: 025-5229-8998

监督电话: 15950492658