



# DZIP1 mouse mAb

Catalog No	BYmab-09149
Isotype	IgG
Reactivity	Human; Mouse
Applications	WB
Gene Name	DZIP1 DZIP DZIP2 KIAA0996
Protein Name	DZIP1
Immunogen	Synthesized peptide derived from human DZIP1 AA range: 73-123
Specificity	This antibody detects endogenous levels of DZIP1 at Human/Mouse
Formulation	Liquid in PBS containing 50% glycerol, 0.5% BSA and 0.02% sodium azide.
Source	Monoclonal, Mouse,IgG
Purification	The antibody was affinity-purified from mouse antiserum by affinity-chromatography using epitope-specific immunogen.
Dilution	WB 1:500-2000
Concentration	1 mg/ml
Purity	≥90%
Storage Stability	-20°C/1 year
Synonyms	
Observed Band	
Cell Pathway	Cytoplasm, cytoskeleton, cilium basal body . Cytoplasm, cytoskeleton, microtubule organizing center, centrosome, centriolar satellite . Cytoplasm, cytoskeleton, microtubule organizing center, centrosome, centriole . Nucleus . Nucleus speckle . Cytoplasm . Localizes to the centriole in cells lacking cilia and to the cilium basal body in ciliated cells (PubMed:19852954). At the exit of mitosis, when the primary cilium is reassembled in daughter cells, localizes at the mother centriole that acts as the basal body of the assembling primary cilium and also accumulates at the ciliary base that constitutes a diffusion barrier for ciliary proteins (By similarity). .
Tissue Specificity	Predominantly expressed in testis (at protein level) (PubMed:15081113, PubMed:32051257). Also expressed in fetal brain, adult oocytes and ovary (PubMed:15081113). Expressed in undifferentiated ES cells (PubMed:15081113). In testis, it is specifically expressed in germ cells (at protein level) (PubMed:15081113, PubMed:32051257). Expressed in mature germ cells and secondary spermatocytes, while it is weakly or not expressed in primary spermatocytes (PubMed:15081113).

Nanjing BYabscience technology Co.,Ltd



## Function

function:May participate in spermatogenesis via its interaction with DAZ.,sequence caution:Contaminating sequence. Potential poly-A sequence.,similarity:Belongs to the DZIP C2H2-type zinc-finger protein family.,similarity:Contains 1 C2H2-type zinc finger.,subcellular location:In testis, it is predominantly nuclear, with some cytoplasmic localization in spermatogonia. Colocalizes with DAZ and DAZL in primordial germ cells.,subunit:Isoform 1 and isoform 2 interact with DAZ proteins. May participate in a RNA-binding complex that functions in both ES cells and germ cells.,tissue specificity:Predominantly expressed in testis. Also expressed in fetal brain, adult oocytes and ovary. Expressed in undifferentiated ES cells. In testis, it is probably specifically expressed in germ cells. Expressed in mature germ cells and secondary spermatocytes, while it is weakly or not expressed in primary sper

## Background

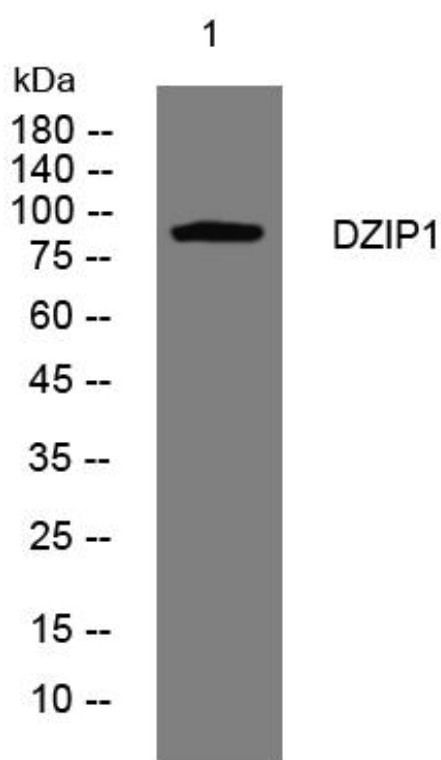
### matters needing attention

Avoid repeated freezing and thawing!

### Usage suggestions

This product can be used in immunological reaction related experiments. For more information, please consult technical personnel.

## Products Images



Western Blot analysis of various cells using DZIP1 mouse mAb

Nanjing BYabs science technology Co.,Ltd

网址: [www.njbybio.com](http://www.njbybio.com)

官方热线: 025-5229-8998

监督电话: 15950492658