



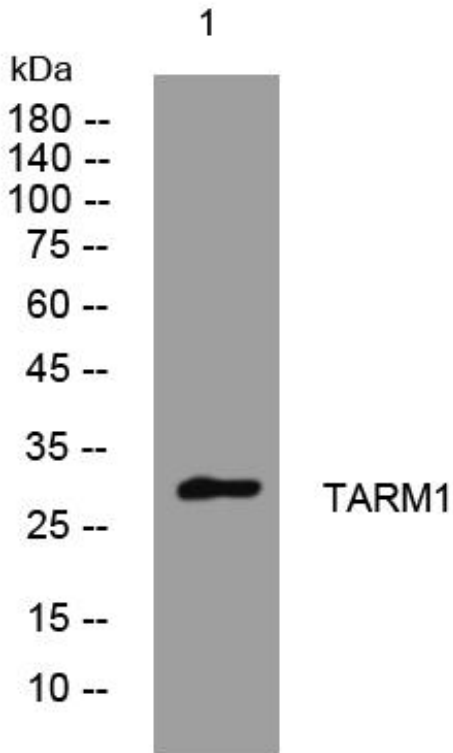
# TARM1 mouse mAb

Catalog No	BYmab-09142
Isotype	IgG
Reactivity	Human; Mouse
Applications	WB
Gene Name	TARM1
Protein Name	TARM1
Immunogen	Synthesized peptide derived from human TARM1 AA range: 36-86
Specificity	This antibody detects endogenous levels of TARM1 at Human/Mouse
Formulation	Liquid in PBS containing 50% glycerol, 0.5% BSA and 0.02% sodium azide.
Source	Monoclonal, Mouse,IgG
Purification	The antibody was affinity-purified from mouse antiserum by affinity-chromatography using epitope-specific immunogen.
Dilution	WB 1:500-2000
Concentration	1 mg/ml
Purity	≥90%
Storage Stability	-20°C/1 year
Synonyms	
Observed Band	
Cell Pathway	Cell membrane ; Single-pass type I membrane protein .
Tissue Specificity	Expressed in fetal and adult liver, lung, testis, thymus and spleen. Expressed in blood neutrophils.
Function	
Background	
matters needing attention	Avoid repeated freezing and thawing!
Usage suggestions	This product can be used in immunological reaction related experiments. For more information, please consult technical personnel.

Nanjing BYabscience technology Co.,Ltd



## Products Images



Western Blot analysis of various cells using TARM1 mouse mAb

Nanjing BYabs science technology Co.,Ltd

网址: [www.njbybio.com](http://www.njbybio.com)

官方热线: 025-5229-8998

监督电话: 15950492658