



AMPL mouse mAb

Catalog No	BYmab-09135
Isotype	IgG
Reactivity	Human; Mouse;Rat
Applications	WB
Gene Name	LAP3 LAPEP PEPS
Protein Name	AMPL
Immunogen	Synthesized peptide derived from human AMPL AA range: 332-382
Specificity	This antibody detects endogenous levels of AMPL at Human/Mouse/Rat
Formulation	Liquid in PBS containing 50% glycerol, 0.5% BSA and 0.02% sodium azide.
Source	Monoclonal, Mouse,IgG
Purification	The antibody was affinity-purified from mouse antiserum by affinity-chromatography using epitope-specific immunogen.
Dilution	WB 1:500-2000
Concentration	1 mg/ml
Purity	≥90%
Storage Stability	-20°C/1 year
Synonyms	
Observed Band	
Cell Pathway	Cytoplasm .
Tissue Specificity	
Function	catalytic activity:Release of an N-terminal amino acid, Xaa- -Yaa-, in which Xaa is preferably Leu, but may be other amino acids including Pro although not Arg or Lys, and Yaa may be Pro. Amino acid amides and methyl esters are also readily hydrolyzed, but rates on arylamides are exceedingly low.,catalytic activity:Release of N-terminal proline from a peptide.,cofactor:Binds 2 zinc ions per subunit. One zinc ion is tightly bound and essential for enzyme activity, while the second metal coordination site can be occupied by zinc, magnesium or manganese to give enzymes of different activities.,function:Presumably involved in the processing and regular turnover of intracellular proteins. Catalyzes the removal of unsubstituted N-terminal amino acids from various peptides.,similarity:Belongs to the peptidase M17 family.,subunit:Homohexamer.,

Nanjing BYabscience technology Co.,Ltd



Background

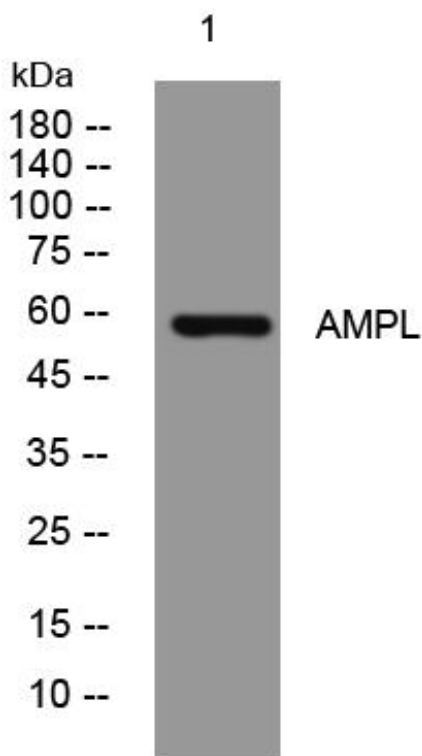
matters needing attention

Avoid repeated freezing and thawing!

Usage suggestions

This product can be used in immunological reaction related experiments. For more information, please consult technical personnel.

Products Images



Western Blot analysis of various cells using AMPL mouse mAb