



# GAG2E mouse mAb

Catalog No	BYmab-09131
Isotype	IgG
Reactivity	Human;Rat;Mouse;
Applications	WB
Gene Name	GAGE2E
Protein Name	GAG2E
Immunogen	Synthesized peptide derived from human GAG2E AA range: 62-112
Specificity	This antibody detects endogenous levels of GAG2E at Human
Formulation	Liquid in PBS containing 50% glycerol, 0.5% BSA and 0.02% sodium azide.
Source	Monoclonal, Mouse,IgG
Purification	The antibody was affinity-purified from mouse antiserum by affinity-chromatography using epitope-specific immunogen.
Dilution	WB 1:500-2000
Concentration	1 mg/ml
Purity	≥90%
Storage Stability	-20°C/1 year
Synonyms	
Observed Band	
Cell Pathway	
Tissue Specificity	
Function	function:Antigen, recognized on melanoma by autologous cytolytic T-lymphocytes.,function:Antigen, recognized on melanoma by autologous cytolytic T-lymphocytes. Completely silent in normal adult tissues, except testis.,similarity:Belongs to the GAGE family.,tissue specificity:Expressed in a variety of tumor tissues but not in normal tissues, except testis.,tissue specificity:Expressed in some prostate cancer tissues but not in normal prostate tissue.,tissue specificity:Not expressed in normal tissues, except in testis, but expressed by a large proportion of tumors of various histological origins.,
Background	

Nanjing BYabscience technology Co.,Ltd

网址: [www.njbybio.com](http://www.njbybio.com)

官方热线: 025-5229-8998

监督电话: 15950492658



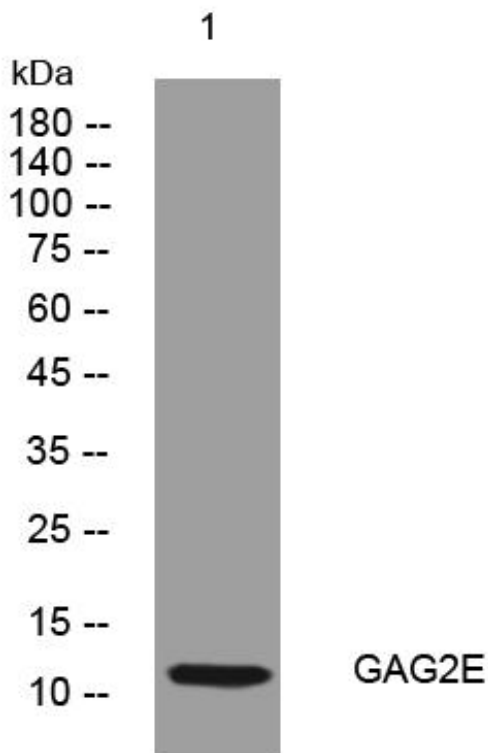
**matters needing attention**

Avoid repeated freezing and thawing!

**Usage suggestions**

This product can be used in immunological reaction related experiments. For more information, please consult technical personnel.

## Products Images



Western Blot analysis of various cells using GAG2E mouse mAb