



KHK mouse mAb

Catalog No	BYmab-09123
Isotype	IgG
Reactivity	Human; Mouse;Rat
Applications	WB
Gene Name	KHK
Protein Name	KHK
Immunogen	Synthesized peptide derived from human KHK AA range: 102-152
Specificity	This antibody detects endogenous levels of KHK at Human/Mouse/Rat
Formulation	Liquid in PBS containing 50% glycerol, 0.5% BSA and 0.02% sodium azide.
Source	Monoclonal, Mouse,IgG
Purification	The antibody was affinity-purified from mouse antiserum by affinity-chromatography using epitope-specific immunogen.
Dilution	WB 1:500-2000
Concentration	1 mg/ml
Purity	≥90%
Storage Stability	-20°C/1 year
Synonyms	
Observed Band	
Cell Pathway	cytoplasm,cytosol,extracellular exosome,
Tissue Specificity	Most abundant in liver, kidney, gut, spleen and pancreas. Low levels also found in adrenal, muscle, brain and eye.
Function	catalytic activity:ATP + D-fructose = ADP + D-fructose 1-phosphate.,caution:Form C has not yet been fully sequenced in its N-terminal (from 1-69).,disease:Defects in KHK are the cause of fructosuria [MIM:229800]. Fructosuria is a benign defect of intermediary metabolism.,enzyme regulation:Requires potassium. Inhibition by ADP.,pathway:Carbohydrate metabolism; fructose metabolism.,similarity:Belongs to the carbohydrate kinase pfkB family.,subunit:Dimer of A-A, A-C or C-C.,tissue specificity:Most abundant in liver, kidney, gut, spleen and pancreas. Low levels also found in adrenal, muscle, brain and eye.,
Background	This gene encodes ketohexokinase that catalyzes conversion of fructose to fructose-1-phosphate. The product of this gene is the first enzyme with a specialized pathway that catabolizes dietary fructose. Alternatively spliced

Nanjing BYabscience technology Co.,Ltd



transcript variants encoding different isoforms have been identified. [provided by RefSeq, Jul 2008],

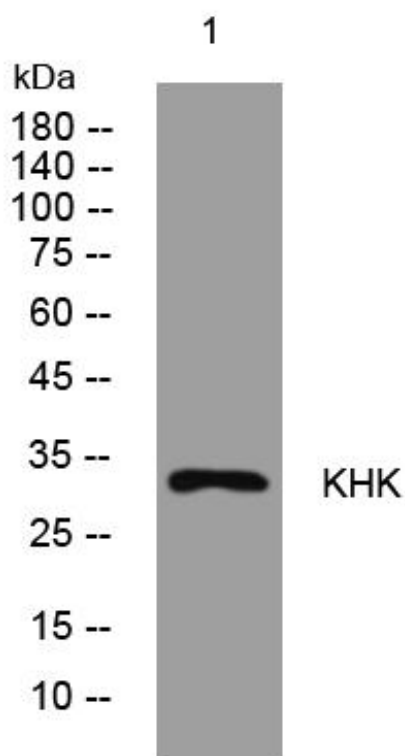
matters needing attention

Avoid repeated freezing and thawing!

Usage suggestions

This product can be used in immunological reaction related experiments. For more information, please consult technical personnel.

Products Images



Western Blot analysis of various cells using KHK mouse mAb