



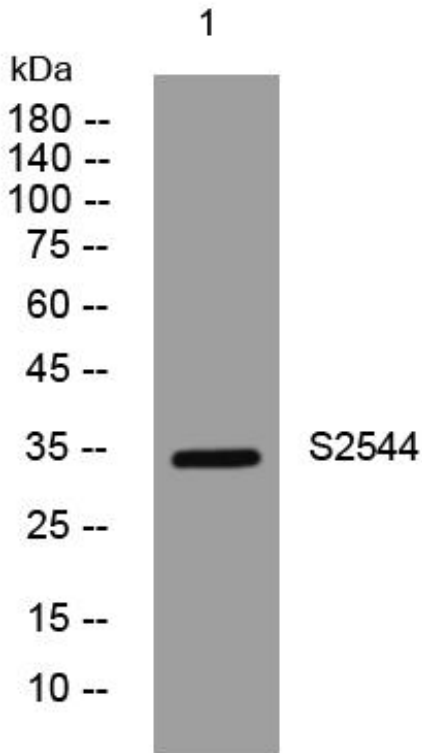
S2544 mouse mAb

Catalog No	BYmab-09117
Isotype	IgG
Reactivity	Human; Mouse
Applications	WB
Gene Name	SLC25A44 KIAA0446
Protein Name	S2544
Immunogen	Synthesized peptide derived from human S2544 AA range: 237-287
Specificity	This antibody detects endogenous levels of S2544 at Human/Mouse
Formulation	Liquid in PBS containing 50% glycerol, 0.5% BSA and 0.02% sodium azide.
Source	Monoclonal, Mouse,IgG
Purification	The antibody was affinity-purified from mouse antiserum by affinity-chromatography using epitope-specific immunogen.
Dilution	WB 1:500-2000
Concentration	1 mg/ml
Purity	≥90%
Storage Stability	-20°C/1 year
Synonyms	
Observed Band	
Cell Pathway	Mitochondrion membrane ; Multi-pass membrane protein .
Tissue Specificity	
Function	similarity:Belongs to the mitochondrial carrier family.,similarity:Contains 3 Solcar repeats.,
Background	SLC25A44 belongs to the SLC25 family of mitochondrial carrier proteins (Haitina et al., 2006 [PubMed 16949250]).[supplied by OMIM, Mar 2008],
matters needing attention	Avoid repeated freezing and thawing!
Usage suggestions	This product can be used in immunological reaction related experiments. For more information, please consult technical personnel.

Nanjing BYabscience technology Co.,Ltd



Products Images



Western Blot analysis of various cells using S2544 mouse mAb

Nanjing BYabs science technology Co.,Ltd

网址: www.njbybio.com

官方热线: 025-5229-8998

监督电话: 15950492658