



# GATA mouse mAb

Catalog No	BYmab-09110
Isotype	IgG
Reactivity	Human; Mouse;Rat
Applications	WB
Gene Name	QRSL1
Protein Name	GATA
Immunogen	Synthesized peptide derived from human GATA AA range: 266-316
Specificity	This antibody detects endogenous levels of GATA at Human/Mouse/Rat
Formulation	Liquid in PBS containing 50% glycerol, 0.5% BSA and 0.02% sodium azide.
Source	Monoclonal, Mouse,IgG
Purification	The antibody was affinity-purified from mouse antiserum by affinity-chromatography using epitope-specific immunogen.
Dilution	WB 1:500-2000
Concentration	1 mg/ml
Purity	≥90%
Storage Stability	-20°C/1 year
Synonyms	
Observed Band	
Cell Pathway	Mitochondrion .
Tissue Specificity	
Function	catalytic activity:ATP + L-glutamyl-tRNA(Gln) + L-glutamine = ADP + phosphate + L-glutaminyI-tRNA(Gln) + L-glutamate.,similarity:Belongs to the amidase family.,
Background	
matters needing attention	Avoid repeated freezing and thawing!
Usage suggestions	This product can be used in immunological reaction related experiments. For more information, please consult technical personnel.

Nanjing BYabscience technology Co.,Ltd

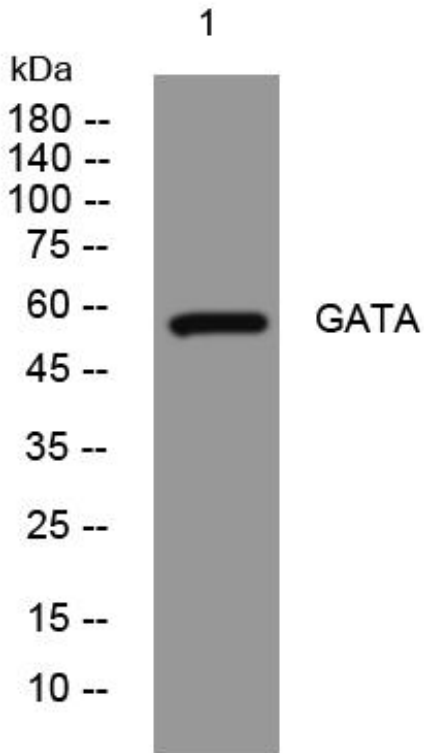
网址: [www.njbybio.com](http://www.njbybio.com)

官方热线: 025-5229-8998

监督电话: 15950492658



## Products Images



Western Blot analysis of various cells using GATA mouse mAb

Nanjing BYabs science technology Co.,Ltd

网址: [www.njbybio.com](http://www.njbybio.com)

官方热线: 025-5229-8998

监督电话: 15950492658