



S35A3 mouse mAb

Catalog No	BYmab-09108
Isotype	IgG
Reactivity	Human; Mouse;Rat
Applications	WB
Gene Name	SLC35A3
Protein Name	S35A3
Immunogen	Synthesized peptide derived from human S35A3 AA range: 263-313
Specificity	This antibody detects endogenous levels of S35A3 at Human/Mouse/Rat
Formulation	Liquid in PBS containing 50% glycerol, 0.5% BSA and 0.02% sodium azide.
Source	Monoclonal, Mouse,IgG
Purification	The antibody was affinity-purified from mouse antiserum by affinity-chromatography using epitope-specific immunogen.
Dilution	WB 1:500-2000
Concentration	1 mg/ml
Purity	≥90%
Storage Stability	-20°C/1 year
Synonyms	
Observed Band	
Cell Pathway	Golgi apparatus membrane ; Multi-pass membrane protein .
Tissue Specificity	
Function	function:Uridine diphosphate-N-acetylglucosamine transporter in the Golgi apparatus.,online information:GlycoGene database,similarity:Belongs to the nucleotide-sugar transporter family. SLC35A subfamily.,
Background	This gene encodes a UDP-N-acetylglucosamine transporter found in the golgi apparatus membrane. In cattle, a missense mutation in this gene causes complex vertebral malformation. Alternative splicing results in multiple transcript variants. [provided by RefSeq, Nov 2012],
matters needing attention	Avoid repeated freezing and thawing!

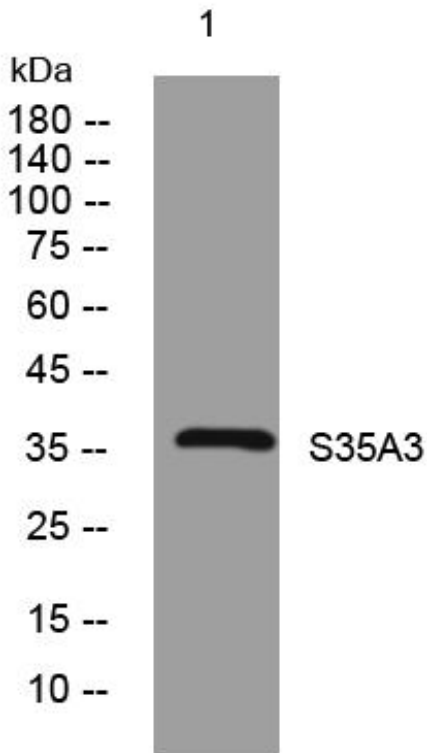
Nanjing BYabscience technology Co.,Ltd



Usage suggestions

This product can be used in immunological reaction related experiments. For more information, please consult technical personnel.

Products Images



Western Blot analysis of various cells using S35A3 mouse mAb

Nanjing BYabs science technology Co.,Ltd

网址: www.njbybio.com

官方热线: 025-5229-8998

监督电话: 15950492658