



# GBRAP mouse mAb

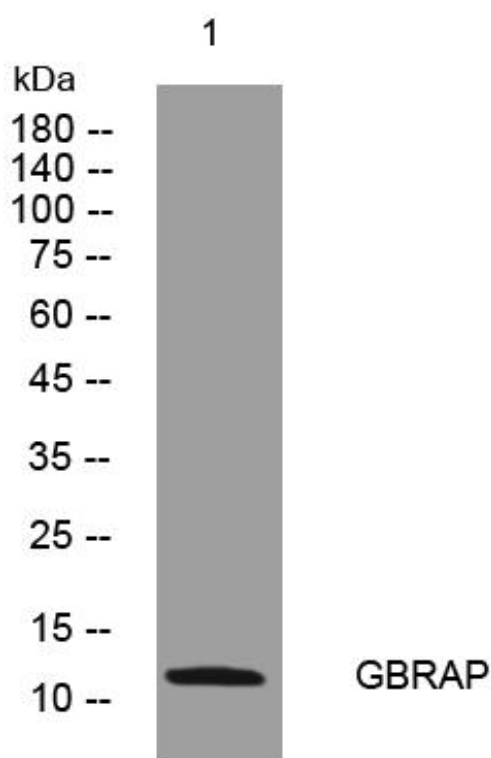
<b>Catalog No</b>	BYmab-09107
<b>Isotype</b>	IgG
<b>Reactivity</b>	Human; Mouse;Rat
<b>Applications</b>	WB
<b>Gene Name</b>	GABARAP FLC3B HT004
<b>Protein Name</b>	GBRAP
<b>Immunogen</b>	Synthesized peptide derived from human GBRAP AA range: 8-58
<b>Specificity</b>	This antibody detects endogenous levels of GBRAP at Human/Mouse/Rat
<b>Formulation</b>	Liquid in PBS containing 50% glycerol, 0.5% BSA and 0.02% sodium azide.
<b>Source</b>	Monoclonal, Mouse,IgG
<b>Purification</b>	The antibody was affinity-purified from mouse antiserum by affinity-chromatography using epitope-specific immunogen.
<b>Dilution</b>	WB 1:500-2000
<b>Concentration</b>	1 mg/ml
<b>Purity</b>	≥90%
<b>Storage Stability</b>	-20°C/1 year
<b>Synonyms</b>	
<b>Observed Band</b>	
<b>Cell Pathway</b>	Cytoplasmic vesicle, autophagosome membrane . Endomembrane system . Cytoplasm, cytoskeleton . Golgi apparatus membrane . Cytoplasmic vesicle . Largely associated with intracellular membrane structures including the Golgi apparatus and postsynaptic cisternae. Colocalizes with microtubules (By similarity). Localizes also to discrete punctae along the ciliary axoneme (By similarity). .
<b>Tissue Specificity</b>	Heart, brain, placenta, liver, skeletal muscle, kidney and pancreas.
<b>Function</b>	function:May play a role in intracellular transport of GABA(A) receptors and its interaction with the cytoskeleton.,similarity:Belongs to the MAP1 LC3 family.,subcellular location:Largely associated with intracellular membrane structures including the Golgi apparatus and post-synaptic cisternae. Colocalizes with microtubules.,subunit:Interacts with GPHN and NSF (By similarity). Interacts with GABRG2, beta-tubulin and ULK1.,tissue specificity:Heart, brain, placenta, liver, skeletal muscle, kidney and pancreas.,

**Nanjing BYabscience technology Co.,Ltd**



<b>Background</b>	Gamma-aminobutyric acid A receptors [GABA(A) receptors] are ligand-gated chloride channels that mediate inhibitory neurotransmission. This gene encodes GABA(A) receptor-associated protein, which is highly positively charged in its N-terminus and shares sequence similarity with light chain-3 of microtubule-associated proteins 1A and 1B. This protein clusters neurotransmitter receptors by mediating interaction with the cytoskeleton. [provided by RefSeq, Jul 2008],
<b>matters needing attention</b>	Avoid repeated freezing and thawing!
<b>Usage suggestions</b>	This product can be used in immunological reaction related experiments. For more information, please consult technical personnel.

## Products Images



Western Blot analysis of various cells using GBRAP mouse mAb