



OSGI2 mouse mAb

Catalog No	BYmab-09103
Isotype	IgG
Reactivity	Human;Rat;Mouse;
Applications	WB
Gene Name	OSGIN2 C8orf1
Protein Name	OSGI2
Immunogen	Synthesized peptide derived from human OSGI2 AA range: 64-114
Specificity	This antibody detects endogenous levels of OSGI2 at Human
Formulation	Liquid in PBS containing 50% glycerol, 0.5% BSA and 0.02% sodium azide.
Source	Monoclonal, Mouse,IgG
Purification	The antibody was affinity-purified from mouse antiserum by affinity-chromatography using epitope-specific immunogen.
Dilution	WB 1:500-2000
Concentration	1 mg/ml
Purity	≥90%
Storage Stability	-20°C/1 year
Synonyms	
Observed Band	
Cell Pathway	
Tissue Specificity	Ubiquitous. Expressed at higher levels in testis and ovary.
Function	function:May be involved in meiosis or the maturation of germ cells.,similarity:Belongs to the OKL38 family.,tissue specificity:Ubiquitous. Expressed at higher levels in testis and ovary.,
Background	
matters needing attention	Avoid repeated freezing and thawing!

Nanjing BYabscience technology Co.,Ltd

网址: www.njbybio.com

官方热线: 025-5229-8998

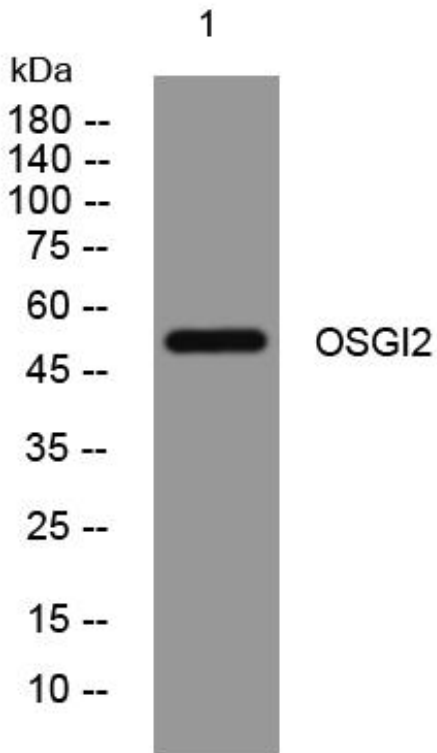
监督电话: 15950492658



Usage suggestions

This product can be used in immunological reaction related experiments. For more information, please consult technical personnel.

Products Images



Western Blot analysis of various cells using OSGI2 mouse mAb

Nanjing BYabscience technology Co.,Ltd

网址: www.njbybio.com

官方热线: 025-5229-8998

监督电话: 15950492658