



KBTB5 mouse mAb

Catalog No	BYmab-09102
Isotype	IgG
Reactivity	Human; Mouse
Applications	WB
Gene Name	KBTBD5 SRYP
Protein Name	KBTB5
Immunogen	Synthesized peptide derived from human KBTB5 AA range: 400-450
Specificity	This antibody detects endogenous levels of KBTB5 at Human/Mouse
Formulation	Liquid in PBS containing 50% glycerol, 0.5% BSA and 0.02% sodium azide.
Source	Monoclonal, Mouse,IgG
Purification	The antibody was affinity-purified from mouse antiserum by affinity-chromatography using epitope-specific immunogen.
Dilution	WB 1:500-2000
Concentration	1 mg/ml
Purity	≥90%
Storage Stability	-20°C/1 year
Synonyms	
Observed Band	
Cell Pathway	Cytoplasm . Cytoplasm, myofibril, sarcomere, A band . Cytoplasm, myofibril, sarcomere, I band .
Tissue Specificity	Highly expressed in fetal (19, 23 and 31 weeks of gestation) and adult skeletal muscle; expression levels tend to be higher in fetal compared to postnatal muscles (at protein level). Also expressed in fetal and adult heart.
Function	similarity:Contains 1 BACK (BTB/Kelch associated) domain.,similarity:Contains 1 BTB (POZ) domain.,similarity:Contains 5 Kelch repeats.,
Background	This gene encodes a protein containing a BACK domain, a BTB/POZ domain, and 5 Kelch repeats, however, its exact function is not known. The gene and the multi-domain protein structure are conserved across different taxa, including primates, rodents, chicken and zebrafish. [provided by RefSeq, Dec 2012],
matters needing attention	Avoid repeated freezing and thawing!

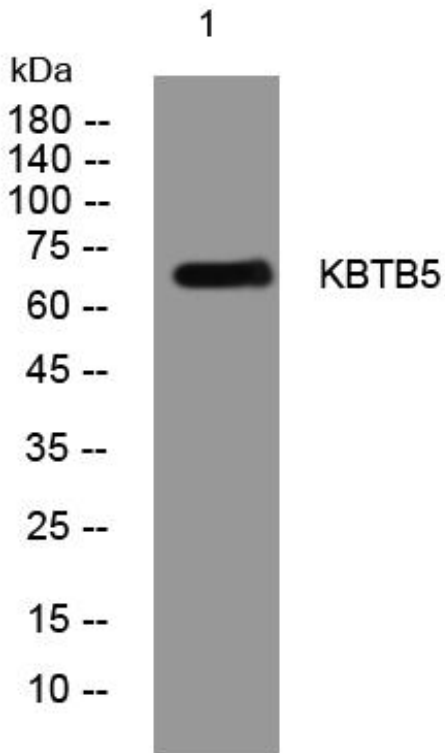
Nanjing BYabscience technology Co.,Ltd



Usage suggestions

This product can be used in immunological reaction related experiments. For more information, please consult technical personnel.

Products Images



Western Blot analysis of various cells using KBTB5 mouse mAb

Nanjing BYabs science technology Co.,Ltd

网址: www.njbybio.com

官方热线: 025-5229-8998

监督电话: 15950492658