



CBPC4 mouse mAb

Catalog No	BYmab-09100
Isotype	IgG
Reactivity	Human; Mouse
Applications	WB
Gene Name	AGBL1 CCP4
Protein Name	CBPC4
Immunogen	Synthesized peptide derived from human CBPC4 AA range: 723-773
Specificity	This antibody detects endogenous levels of CBPC4 at Human/Mouse
Formulation	Liquid in PBS containing 50% glycerol, 0.5% BSA and 0.02% sodium azide.
Source	Monoclonal, Mouse,IgG
Purification	The antibody was affinity-purified from mouse antiserum by affinity-chromatography using epitope-specific immunogen.
Dilution	WB 1:500-2000
Concentration	1 mg/ml
Purity	≥90%
Storage Stability	-20°C/1 year
Synonyms	
Observed Band	
Cell Pathway	Cytoplasm, cytosol .
Tissue Specificity	Expressed in corneal endothelium.
Function	cofactor: Binds 1 zinc ion per subunit.,function: May play a role in the processing of tubulin.,similarity: Belongs to the peptidase M14 family.,
Background	Polyglutamylation is a reversible posttranslational modification catalyzed by polyglutamylases that results in the addition of glutamate side chains on the modified protein. This gene encodes a glutamate decarboxylase that catalyzes the deglutamylation of polyglutamylated proteins. Mutations in this gene result in dominant late-onset Fuchs corneal dystrophy. [provided by RefSeq, Nov 2013],
matters needing attention	Avoid repeated freezing and thawing!

Nanjing BYabscience technology Co.,Ltd

网址: www.njbybio.com

官方热线: 025-5229-8998

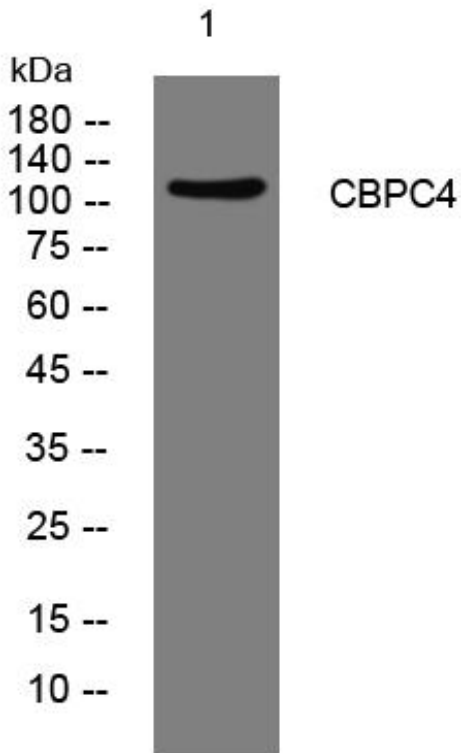
监督电话: 15950492658



Usage suggestions

This product can be used in immunological reaction related experiments. For more information, please consult technical personnel.

Products Images



Western Blot analysis of various cells using CBPC4 mouse mAb

Nanjing BYabscience technology Co.,Ltd

网址: www.njbybio.com

官方热线: 025-5229-8998

监督电话: 15950492658