



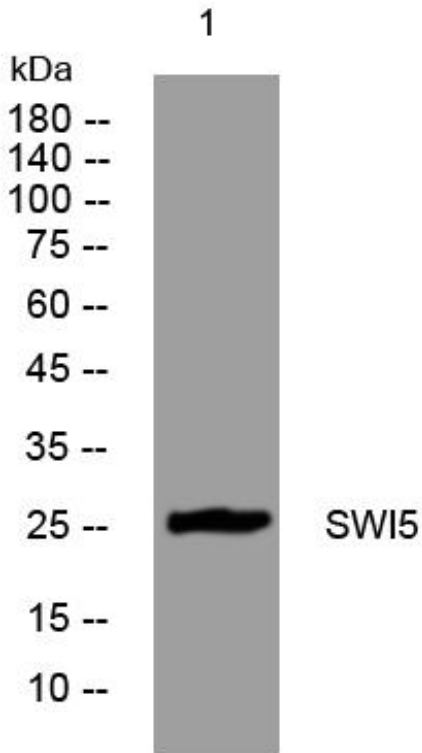
SWI5 mouse mAb

Catalog No	BYmab-09093
Isotype	IgG
Reactivity	Human; Mouse;Rat
Applications	WB
Gene Name	SWI5 C9orf119 SAE3
Protein Name	SWI5
Immunogen	Synthesized peptide derived from human SWI5 AA range: 185-235
Specificity	This antibody detects endogenous levels of SWI5 at Human/Mouse/Rat
Formulation	Liquid in PBS containing 50% glycerol, 0.5% BSA and 0.02% sodium azide.
Source	Monoclonal, Mouse,IgG
Purification	The antibody was affinity-purified from mouse antiserum by affinity-chromatography using epitope-specific immunogen.
Dilution	WB 1:500-2000
Concentration	1 mg/ml
Purity	≥90%
Storage Stability	-20°C/1 year
Synonyms	
Observed Band	
Cell Pathway	Nucleus .
Tissue Specificity	
Function	similarity:Belongs to the SAE3 family.,
Background	
matters needing attention	Avoid repeated freezing and thawing!
Usage suggestions	This product can be used in immunological reaction related experiments. For more information, please consult technical personnel.

Nanjing BYabscience technology Co.,Ltd



Products Images



Western Blot analysis of various cells using SWI5 mouse mAb