



ZY11B mouse mAb

Catalog No	BYmab-09091
Isotype	IgG
Reactivity	Human; Mouse
Applications	WB
Gene Name	ZYG11B KIAA1730
Protein Name	ZY11B
Immunogen	Synthesized peptide derived from human ZY11B AA range: 432-482
Specificity	This antibody detects endogenous levels of ZY11B at Human/Mouse
Formulation	Liquid in PBS containing 50% glycerol, 0.5% BSA and 0.02% sodium azide.
Source	Monoclonal, Mouse,IgG
Purification	The antibody was affinity-purified from mouse antiserum by affinity-chromatography using epitope-specific immunogen.
Dilution	WB 1:500-2000
Concentration	1 mg/ml
Purity	≥90%
Storage Stability	-20°C/1 year
Synonyms	
Observed Band	
Cell Pathway	Cul2-RING ubiquitin ligase complex,
Tissue Specificity	
Function	function:Probably acts as target recruitment subunit in the E3 ubiquitin ligase complex ZYG11B-CUL2-Elongin BC.,similarity:Belongs to the zyg-11 family.,similarity:Contains 2 ARM repeats.,similarity:Contains 3 LRR (leucine-rich) repeats.,subunit:Interacts with TCEB1/Elongin C. Part of an E3 ubiquitin ligase complex including ZYG11B, CUL2 and Elongin BC.,
Background	
matters needing attention	Avoid repeated freezing and thawing!

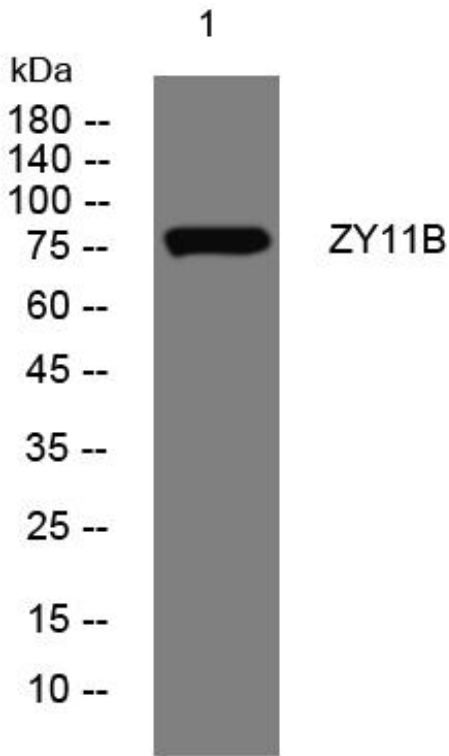
Nanjing BYabscience technology Co.,Ltd



Usage suggestions

This product can be used in immunological reaction related experiments. For more information, please consult technical personnel.

Products Images



Western Blot analysis of various cells using ZY11B mouse mAb

Nanjing BYabs science technology Co.,Ltd

网址: www.njbybio.com

官方热线: 025-5229-8998

监督电话: 15950492658