



HP1B3 mouse mAb

Catalog No	BYmab-09090
Isotype	IgG
Reactivity	Human; Mouse;Rat
Applications	WB
Gene Name	HP1BP3
Protein Name	HP1B3
Immunogen	Synthesized peptide derived from human HP1B3 AA range: 283-333
Specificity	This antibody detects endogenous levels of HP1B3 at Human/Mouse/Rat
Formulation	Liquid in PBS containing 50% glycerol, 0.5% BSA and 0.02% sodium azide.
Source	Monoclonal, Mouse,IgG
Purification	The antibody was affinity-purified from mouse antiserum by affinity-chromatography using epitope-specific immunogen.
Dilution	WB 1:500-2000
Concentration	1 mg/ml
Purity	≥90%
Storage Stability	-20°C/1 year
Synonyms	
Observed Band	
Cell Pathway	Nucleus . Chromosome . localized in nuclei but not in nucleoli in interphase. Colocalized with chromosomes in mitosis, with a gradually increased during G1 progression and a maximum level during late G1 phase (G1/S). .
Tissue Specificity	
Function	function:Component of heterochromatin, may be involved in chromatin structure and function.,PTM:Phosphorylated upon DNA damage, probably by ATM or ATR.,similarity:Belongs to the histone H1/H5 family.,similarity:In the C-terminal section; belongs to the histone H1/H5 family.,subunit:Interacts with CBX5.,
Background	
matters needing attention	Avoid repeated freezing and thawing!

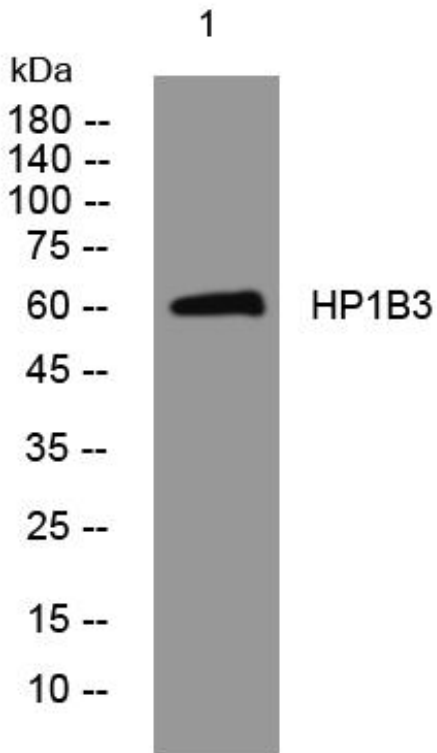
Nanjing BYabscience technology Co.,Ltd



Usage suggestions

This product can be used in immunological reaction related experiments. For more information, please consult technical personnel.

Products Images



Western Blot analysis of various cells using HP1B3 mouse mAb

Nanjing BYabs science technology Co.,Ltd

网址: www.njbybio.com

官方热线: 025-5229-8998

监督电话: 15950492658