



RSLBA mouse mAb

Catalog No	BYmab-09087
Isotype	IgG
Reactivity	Human; Mouse;Rat
Applications	WB
Gene Name	RASL11A
Protein Name	RSLBA
Immunogen	Synthesized peptide derived from human RSLBA AA range: 68-118
Specificity	This antibody detects endogenous levels of RSLBA at Human/Mouse/Rat
Formulation	Liquid in PBS containing 50% glycerol, 0.5% BSA and 0.02% sodium azide.
Source	Monoclonal, Mouse,IgG
Purification	The antibody was affinity-purified from mouse antiserum by affinity-chromatography using epitope-specific immunogen.
Dilution	WB 1:500-2000
Concentration	1 mg/ml
Purity	≥90%
Storage Stability	-20°C/1 year
Synonyms	
Observed Band	
Cell Pathway	Nucleus, nucleolus . Associates with rDNA transcription unit throughout the cell cycle. .
Tissue Specificity	Widely expressed. Down-regulated in prostate tumors compared to normal prostate tissue. High levels found in colon tumor and normal colon tissue followed by small intestine, liver, jejunum, ileum, bladder and aorta. Lowest levels observed in endothelial cells.
Function	developmental stage:Down-regulated during development of THP-1 monocytes into macrophages.,induction:Down-regulated by TGFB1.,similarity:Belongs to the small GTPase superfamily. Ras family.,tissue specificity:Widely expressed. Down-regulated in prostate tumors compared to normal prostate tissue. High levels found in colon tumor and normal colon tissue followed by small intestine, liver, jejunum, ileum, bladder and aorta. Lowest levels observed in endothelial cells.,
Background	RASL11A is a member of the small GTPase protein family with a high degree of similarity to RAS (see HRAS, MIM 190020) proteins.[supplied by OMIM, Nov

Nanjing BYabscience technology Co.,Ltd



2008],

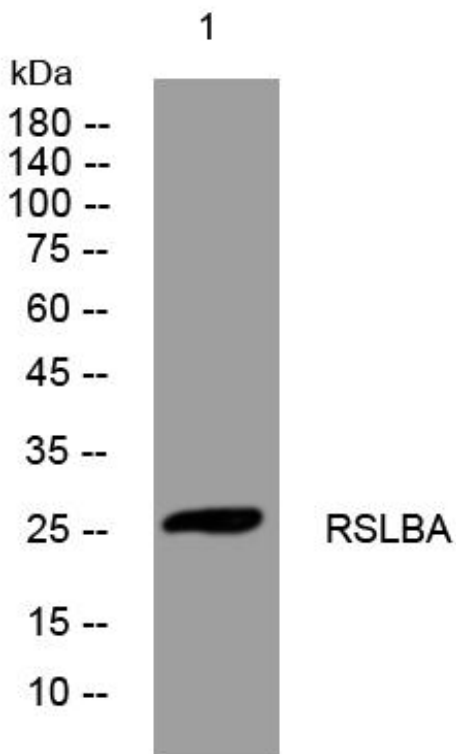
matters needing attention

Avoid repeated freezing and thawing!

Usage suggestions

This product can be used in immunological reaction related experiments. For more information, please consult technical personnel.

Products Images



Western Blot analysis of various cells using RSLBA mouse mAb

Nanjing BYabs science technology Co.,Ltd

网址: www.njbybio.com

官方热线: 025-5229-8998

监督电话: 15950492658