



OSB11 mouse mAb

Catalog No	BYmab-09082
Isotype	IgG
Reactivity	Human; Mouse
Applications	WB
Gene Name	OSBPL11 ORP11 OSBP12
Protein Name	OSB11
Immunogen	Synthesized peptide derived from human OSB11 AA range: 180-230
Specificity	This antibody detects endogenous levels of OSB11 at Human/Mouse
Formulation	Liquid in PBS containing 50% glycerol, 0.5% BSA and 0.02% sodium azide.
Source	Monoclonal, Mouse,IgG
Purification	The antibody was affinity-purified from mouse antiserum by affinity-chromatography using epitope-specific immunogen.
Dilution	WB 1:500-2000
Concentration	1 mg/ml
Purity	≥90%
Storage Stability	-20°C/1 year
Synonyms	
Observed Band	
Cell Pathway	Late endosome membrane . Golgi apparatus, trans-Golgi network membrane . Localizes at the Golgi-late endosome interface.
Tissue Specificity	Present at highest levels in ovary, testis, kidney, liver, stomach, brain, and adipose tissue. Strong expression (at protein level) in epithelial cells of kidney tubules, testicular tubules, caecum, and skin (PubMed:20599956). Present at low levels in subcutaneous and visceral adipose tissue (at protein level)(PubMed:23028956).
Function	similarity:Belongs to the OSBP family.,similarity:Contains 1 PH domain.,tissue specificity:Widely expressed.,
Background	This gene encodes a member of the oxysterol-binding protein (OSBP) family, a group of intracellular lipid receptors. Like most members, the encoded protein contains an N-terminal pleckstrin homology domain and a highly conserved C-terminal OSBP-like sterol-binding domain. [provided by RefSeq, Jul 2008],

Nanjing BYabscience technology Co.,Ltd

网址: www.njbybio.com

官方热线: 025-5229-8998

监督电话: 15950492658



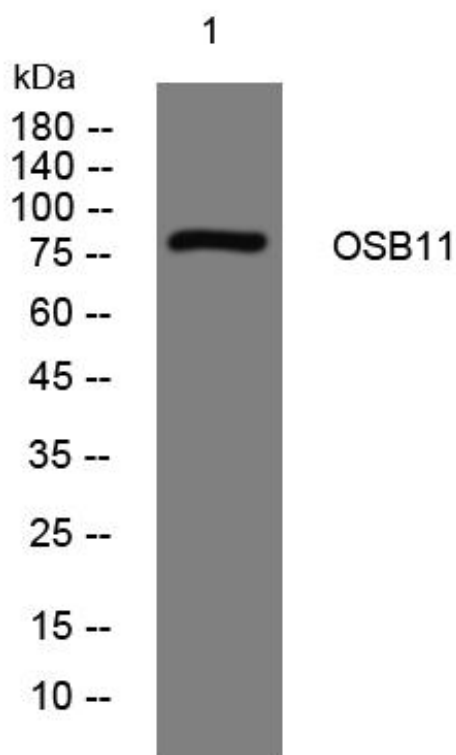
matters needing attention

Avoid repeated freezing and thawing!

Usage suggestions

This product can be used in immunological reaction related experiments. For more information, please consult technical personnel.

Products Images



Western Blot analysis of various cells using OSB11 mouse mAb