



# VPS16 mouse mAb

<b>Catalog No</b>	BYmab-09060
<b>Isotype</b>	IgG
<b>Reactivity</b>	Human; Mouse
<b>Applications</b>	WB
<b>Gene Name</b>	VPS16
<b>Protein Name</b>	VPS16
<b>Immunogen</b>	Synthesized peptide derived from human VPS16 AA range: 568-618
<b>Specificity</b>	This antibody detects endogenous levels of VPS16 at Human/Mouse
<b>Formulation</b>	Liquid in PBS containing 50% glycerol, 0.5% BSA and 0.02% sodium azide.
<b>Source</b>	Monoclonal, Mouse,IgG
<b>Purification</b>	The antibody was affinity-purified from mouse antiserum by affinity-chromatography using epitope-specific immunogen.
<b>Dilution</b>	WB 1:500-2000
<b>Concentration</b>	1 mg/ml
<b>Purity</b>	≥90%
<b>Storage Stability</b>	-20°C/1 year
<b>Synonyms</b>	
<b>Observed Band</b>	
<b>Cell Pathway</b>	Late endosome membrane ; Peripheral membrane protein ; Cytoplasmic side . Lysosome membrane ; Peripheral membrane protein ; Cytoplasmic side . Early endosome . Cytoplasmic vesicle, clathrin-coated vesicle . Cytoplasmic vesicle, autophagosome . Colocalizes with AP-3, clathrin, Rab5 and Rab7b (By similarity). Cytoplasmic, peripheral membrane protein associated with early endosomes and late endosomes/lysosomes. .
<b>Tissue Specificity</b>	Ubiquitous.
<b>Function</b>	function:May play a role in vesicle-mediated protein trafficking to lysosomal compartments and in membrane docking/fusion reactions of late endosomes/lysosomes.,similarity:Belongs to the VPS16 family.,subcellular location:Cytoplasmic, peripheral membrane protein associated with late endosomes/lysosomes.,subunit:Large hetero-oligomeric complex together with VPS11, VPS18 and VPS33A. Interacts with STX7.,tissue specificity:Ubiquitous.,

**Nanjing BYabscience technology Co.,Ltd**

网址: [www.njbybio.com](http://www.njbybio.com)

官方热线: 025-5229-8998

监督电话: 15950492658



## Background

Vesicle mediated protein sorting plays an important role in segregation of intracellular molecules into distinct organelles. Genetic studies in yeast have identified more than 40 vacuolar protein sorting (VPS) genes involved in vesicle transport to vacuoles. This gene encodes the human homolog of yeast class C Vps16 protein. The mammalian class C Vps proteins are predominantly associated with late endosomes/lysosomes, and like their yeast counterparts, may mediate vesicle trafficking steps in the endosome/lysosome pathway. Two transcript variants encoding different isoforms have been found for this gene. [provided by RefSeq, Jul 2009],

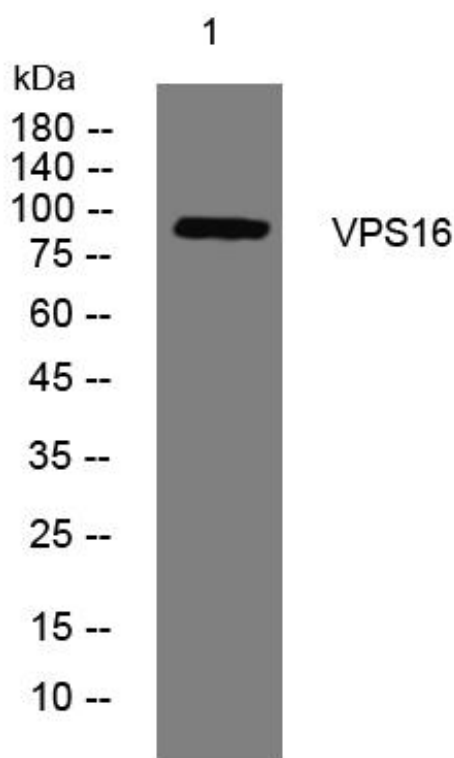
## matters needing attention

Avoid repeated freezing and thawing!

## Usage suggestions

This product can be used in immunological reaction related experiments. For more information, please consult technical personnel.

## Products Images



Western Blot analysis of various cells using VPS16 mouse mAb