



MPPE1 mouse mAb

Catalog No	BYmab-09056
Isotype	IgG
Reactivity	Human; Mouse;Rat
Applications	WB
Gene Name	MPPE1 PGAP5 PP579
Protein Name	MPPE1
Immunogen	Synthesized peptide derived from human MPPE1 AA range: 89-139
Specificity	This antibody detects endogenous levels of MPPE1 at Human/Mouse/Rat
Formulation	Liquid in PBS containing 50% glycerol, 0.5% BSA and 0.02% sodium azide.
Source	Monoclonal, Mouse,IgG
Purification	The antibody was affinity-purified from mouse antiserum by affinity-chromatography using epitope-specific immunogen.
Dilution	WB 1:500-2000
Concentration	1 mg/ml
Purity	≥90%
Storage Stability	-20°C/1 year
Synonyms	
Observed Band	
Cell Pathway	Endoplasmic reticulum-Golgi intermediate compartment membrane ; Multi-pass membrane protein . Golgi apparatus, cis-Golgi network membrane ; Multi-pass membrane protein . Also localizes to endoplasmic reticulum exit site.
Tissue Specificity	Expressed in brain.
Function	cofactor: Binds 2 divalent metal cations.,similarity:Belongs to the metallophosphoesterase superfamily. MPPE1 family.,tissue specificity:Expressed in brain.,
Background	
matters needing attention	Avoid repeated freezing and thawing!

Nanjing BYabscience technology Co.,Ltd

网址: www.njbybio.com

官方热线: 025-5229-8998

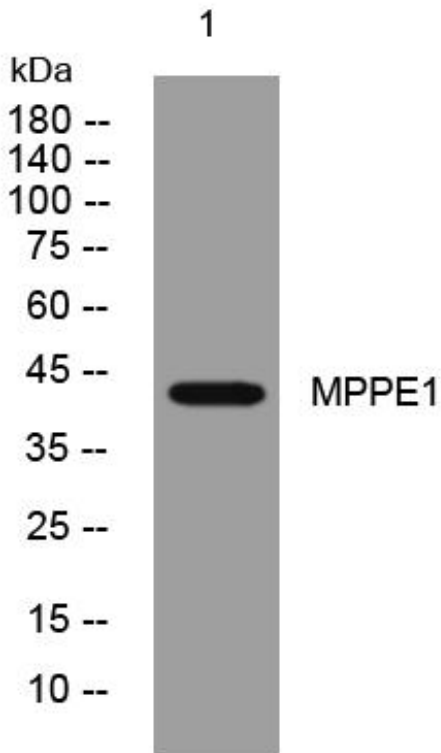
监督电话: 15950492658



Usage suggestions

This product can be used in immunological reaction related experiments. For more information, please consult technical personnel.

Products Images



Western Blot analysis of various cells using MPPE1 mouse mAb

Nanjing BYabs science technology Co.,Ltd

网址: www.njbybio.com

官方热线: 025-5229-8998

监督电话: 15950492658