



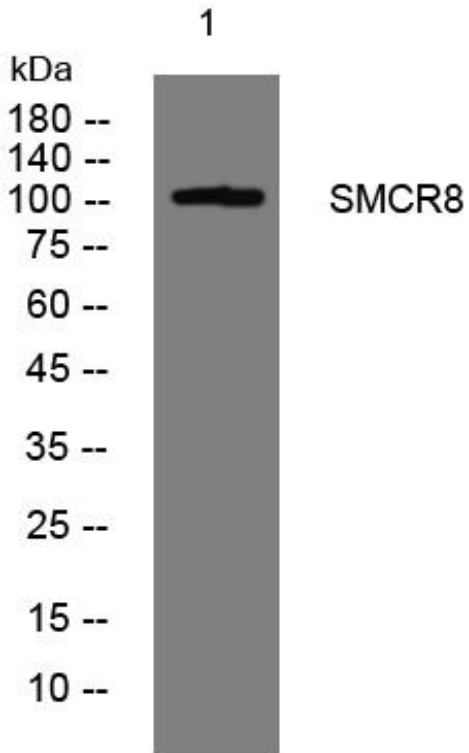
# SMCR8 mouse mAb

Catalog No	BYmab-09046
Isotype	IgG
Reactivity	Human; Mouse
Applications	WB
Gene Name	SMCR8
Protein Name	SMCR8
Immunogen	Synthesized peptide derived from human SMCR8 AA range: 698-748
Specificity	This antibody detects endogenous levels of SMCR8 at Human/Mouse
Formulation	Liquid in PBS containing 50% glycerol, 0.5% BSA and 0.02% sodium azide.
Source	Monoclonal, Mouse,IgG
Purification	The antibody was affinity-purified from mouse antiserum by affinity-chromatography using epitope-specific immunogen.
Dilution	WB 1:500-2000
Concentration	1 mg/ml
Purity	≥90%
Storage Stability	-20°C/1 year
Synonyms	
Observed Band	
Cell Pathway	Cytoplasm . Nucleus . Cell junction, synapse, presynapse . Cell junction, synapse, postsynapse . Localizes mainly in the cytoplasm. .
Tissue Specificity	Expressed in all tissues tested.
Function	tissue specificity:Expressed in all tissues tested.,
Background	
matters needing attention	Avoid repeated freezing and thawing!
Usage suggestions	This product can be used in immunological reaction related experiments. For more information, please consult technical personnel.

Nanjing BYabscience technology Co.,Ltd



## Products Images



Western Blot analysis of various cells using SMCR8 mouse mAb