



S35G1 mouse mAb

Catalog No	BYmab-09037
Isotype	IgG
Reactivity	Human; Mouse
Applications	WB
Gene Name	SLC35G1 C10orf60 TMEM20
Protein Name	S35G1
Immunogen	Synthesized peptide derived from human S35G1 AA range: 14-64
Specificity	This antibody detects endogenous levels of S35G1 at Human/Mouse
Formulation	Liquid in PBS containing 50% glycerol, 0.5% BSA and 0.02% sodium azide.
Source	Monoclonal, Mouse,IgG
Purification	The antibody was affinity-purified from mouse antiserum by affinity-chromatography using epitope-specific immunogen.
Dilution	WB 1:500-2000
Concentration	1 mg/ml
Purity	≥90%
Storage Stability	-20°C/1 year
Synonyms	
Observed Band	
Cell Pathway	Cell membrane ; Multi-pass membrane protein . Endoplasmic reticulum membrane ; Multi-pass membrane protein . Translocates from the endoplasmic reticulum to the cell membrane in response to a depletion of intracellular calcium and is detected at punctae corresponding to junctions between the endoplasmic reticulum and the cell membrane.
Tissue Specificity	Ubiquitously expressed.
Function	similarity:Contains 2 DUF6 domains.,
Background	This gene encodes a transmembrane protein which is a member of the drug/metabolite transporter protein superfamily. The encoded protein may play a role in the regulation of calcium levels inside the cell. [provided by RefSeq, Sep 2016],

Nanjing BYabscience technology Co.,Ltd

网址: www.njbybio.com

官方热线: 025-5229-8998

监督电话: 15950492658



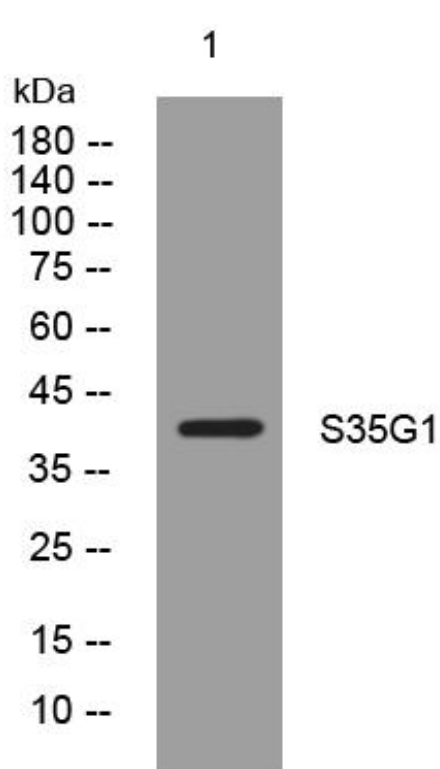
matters needing attention

Avoid repeated freezing and thawing!

Usage suggestions

This product can be used in immunological reaction related experiments. For more information, please consult technical personnel.

Products Images



Western Blot analysis of various cells using S35G1 mouse mAb