



CLC4E mouse mAb

Catalog No	BYmab-09034
Isotype	IgG
Reactivity	Human; Mouse;Rat
Applications	WB
Gene Name	CLEC4E CLECSF9 MINCLE UNQ218/PRO244
Protein Name	CLC4E
Immunogen	Synthesized peptide derived from human CLC4E AA range: 46-96
Specificity	This antibody detects endogenous levels of CLC4E at Human/Mouse/Rat
Formulation	Liquid in PBS containing 50% glycerol, 0.5% BSA and 0.02% sodium azide.
Source	Monoclonal, Mouse,IgG
Purification	The antibody was affinity-purified from mouse antiserum by affinity-chromatography using epitope-specific immunogen.
Dilution	WB 1:500-2000
Concentration	1 mg/ml
Purity	≥90%
Storage Stability	-20°C/1 year
Synonyms	
Observed Band	
Cell Pathway	Cell membrane ; Single-pass type II membrane protein . Cell projection, phagocytic cup .
Tissue Specificity	Expressed in monocytes and macrophages.
Function	function:May play a role in the response to inflammatory stimuli in peritoneal macrophages. May be involved in immune surveillance processes under transcriptional control of CEBPB.,online information:Mincle,similarity:Contains 1 C-type lectin domain.,
Background	This gene encodes a member of the C-type lectin/C-type lectin-like domain (CTL/CTLD) superfamily. Members of this family share a common protein fold and have diverse functions, such as cell adhesion, cell-cell signalling, glycoprotein turnover, and roles in inflammation and immune response. The encoded type II transmembrane protein is a downstream target of CCAAT/enhancer binding protein (C/EBP), beta (CEBPB) and may play a role in inflammation. Alternative splice variants have been described but their full-length sequence has not been

Nanjing BYabscience technology Co.,Ltd



determined. This gene is closely linked to other CTL/CTLD superfamily members on chromosome 12p13 in the natural killer gene complex region. [provided by RefSeq, Jul 2008],

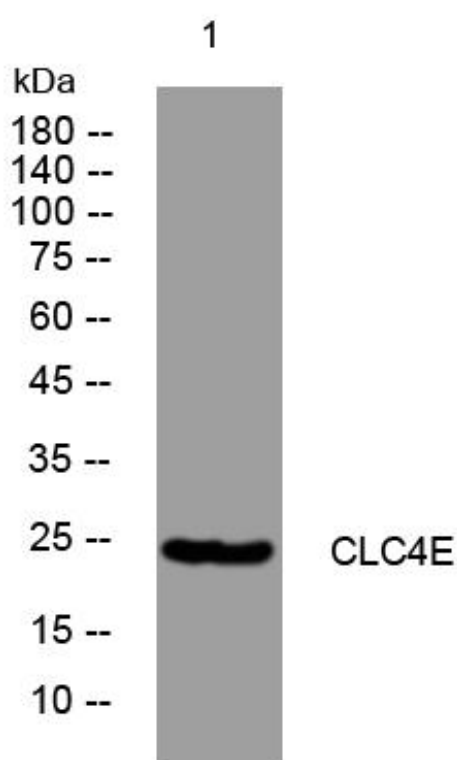
matters needing attention

Avoid repeated freezing and thawing!

Usage suggestions

This product can be used in immunological reaction related experiments. For more information, please consult technical personnel.

Products Images



Western Blot analysis of various cells using CLC4E mouse mAb

Nanjing BYabscience technology Co.,Ltd

网址: www.njbybio.com

官方热线: 025-5229-8998

监督电话: 15950492658