



ZFY mouse mAb

Catalog No	BYmab-09032
Isotype	IgG
Reactivity	Human;Rat;Mouse;
Applications	WB
Gene Name	ZFY
Protein Name	ZFY
Immunogen	Synthesized peptide derived from human ZFY AA range: 689-739
Specificity	This antibody detects endogenous levels of ZFY at Human
Formulation	Liquid in PBS containing 50% glycerol, 0.5% BSA and 0.02% sodium azide.
Source	Monoclonal, Mouse,IgG
Purification	The antibody was affinity-purified from mouse antiserum by affinity-chromatography using epitope-specific immunogen.
Dilution	WB 1:500-2000
Concentration	1 mg/ml
Purity	≥90%
Storage Stability	-20°C/1 year
Synonyms	
Observed Band	
Cell Pathway	Nucleus.
Tissue Specificity	
Function	caution:Was originally thought to be the testis determining factor (TDF).,function:Probable transcriptional activator.,similarity:Belongs to the krueppel C2H2-type zinc-finger protein family. ZFX/ZFY subfamily.,similarity:Contains 13 C2H2-type zinc fingers.,
Background	This gene encodes a zinc finger-containing protein that may function as a transcription factor. This gene was once a candidate gene for the testis-determining factor (TDF) and was erroneously referred to as TDF. [provided by RefSeq, Jul 2008],
matters needing attention	Avoid repeated freezing and thawing!

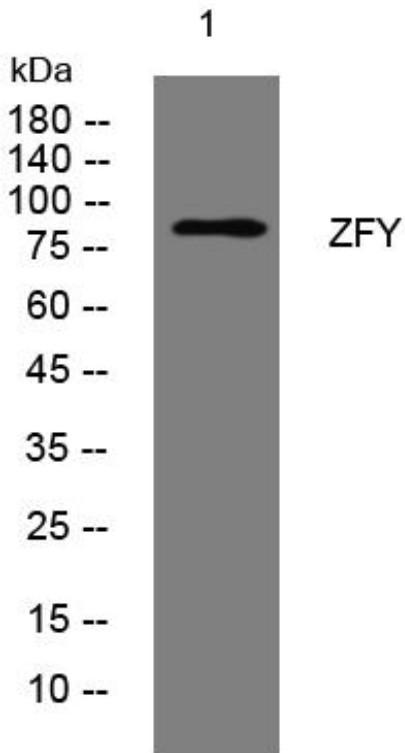
Nanjing BYabscience technology Co.,Ltd



Usage suggestions

This product can be used in immunological reaction related experiments. For more information, please consult technical personnel.

Products Images



Western Blot analysis of various cells using ZFY mouse mAb

Nanjing BYabs science technology Co.,Ltd

网址: www.njbybio.com

官方热线: 025-5229-8998

监督电话: 15950492658