



# GLTL5 mouse mAb

<b>Catalog No</b>	BYmab-09029
<b>Isotype</b>	IgG
<b>Reactivity</b>	Human; Mouse
<b>Applications</b>	WB
<b>Gene Name</b>	GALNTL5 GALNT15
<b>Protein Name</b>	GLTL5
<b>Immunogen</b>	Synthesized peptide derived from human GLTL5 AA range: 79-129
<b>Specificity</b>	This antibody detects endogenous levels of GLTL5 at Human/Mouse
<b>Formulation</b>	Liquid in PBS containing 50% glycerol, 0.5% BSA and 0.02% sodium azide.
<b>Source</b>	Monoclonal, Mouse,IgG
<b>Purification</b>	The antibody was affinity-purified from mouse antiserum by affinity-chromatography using epitope-specific immunogen.
<b>Dilution</b>	WB 1:500-2000
<b>Concentration</b>	1 mg/ml
<b>Purity</b>	≥90%
<b>Storage Stability</b>	-20°C/1 year
<b>Synonyms</b>	
<b>Observed Band</b>	
<b>Cell Pathway</b>	Late endosome membrane ; Single-pass type II membrane protein . Localizes to the juxtannuclear region, possibly the late endosome. Not localized in the Golgi apparatus in round spermatids (By similarity). .
<b>Tissue Specificity</b>	Mainly expressed in testis. Weakly or not expressed in other tissues.
<b>Function</b>	caution:In contrast to other members of the family, it lacks the C-terminal ricin B-type lectin domain, which contributes to the glycopeptide specificity. Its precise function is therefore unsure.,cofactor:Calcium.,cofactor:Manganese.,domain:There are two conserved domains in the glycosyltransferase region: the N-terminal domain (domain A, also called GT1 motif), which is probably involved in manganese coordination and substrate binding and the C-terminal domain (domain B, also called Gal/GalNAc-T motif), which is probably involved in catalytic reaction and UDP-Gal binding.,function:May catalyze the initial reaction in O-linked oligosaccharide biosynthesis, the transfer of an N-acetyl-D-galactosamine residue to a serine or threonine residue on the protein receptor.,online information:GlycoGene

**Nanjing BYabscience technology Co.,Ltd**



database,online information:Putative polypeptide  
N-acetylgalactosaminyltransferase-like protein

## Background

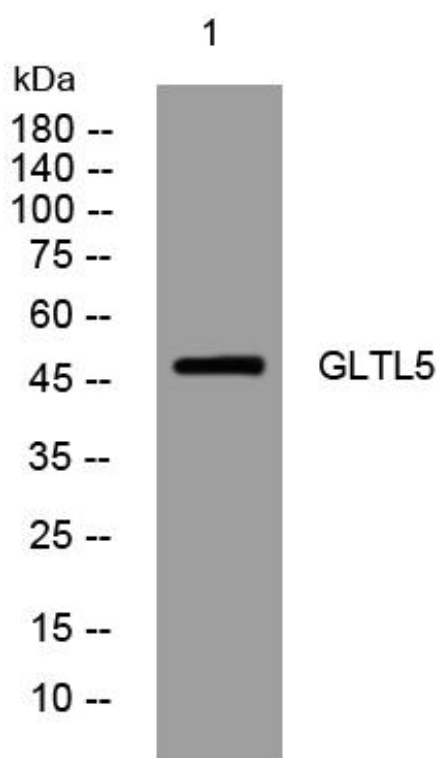
### matters needing attention

Avoid repeated freezing and thawing!

### Usage suggestions

This product can be used in immunological reaction related experiments. For more information, please consult technical personnel.

## Products Images



Western Blot analysis of various cells using GLTL5 mouse mAb

Nanjing BYabscience technology Co.,Ltd

网址: [www.njbybio.com](http://www.njbybio.com)

官方热线: 025-5229-8998

监督电话: 15950492658