



# STX17 mouse mAb

<b>Catalog No</b>	BYmab-09027
<b>Isotype</b>	IgG
<b>Reactivity</b>	Human; Mouse;Rat
<b>Applications</b>	WB
<b>Gene Name</b>	STX17
<b>Protein Name</b>	STX17
<b>Immunogen</b>	Synthesized peptide derived from human STX17 AA range: 30-80
<b>Specificity</b>	This antibody detects endogenous levels of STX17 at Human/Mouse/Rat
<b>Formulation</b>	Liquid in PBS containing 50% glycerol, 0.5% BSA and 0.02% sodium azide.
<b>Source</b>	Monoclonal, Mouse,IgG
<b>Purification</b>	The antibody was affinity-purified from mouse antiserum by affinity-chromatography using epitope-specific immunogen.
<b>Dilution</b>	WB 1:500-2000
<b>Concentration</b>	1 mg/ml
<b>Purity</b>	≥90%
<b>Storage Stability</b>	-20°C/1 year
<b>Synonyms</b>	
<b>Observed Band</b>	
<b>Cell Pathway</b>	Endoplasmic reticulum membrane ; Multi-pass membrane protein . Smooth endoplasmic reticulum membrane ; Multi-pass membrane protein . Endoplasmic reticulum-Golgi intermediate compartment membrane ; Multi-pass membrane protein . Cytoplasmic vesicle, autophagosome membrane ; Multi-pass membrane protein . Cytoplasmic vesicle, COPII-coated vesicle membrane ; Multi-pass membrane protein . Cytoplasm, cytosol . Mitochondrion membrane ; Multi-pass membrane protein . Has a hairpin-like insertion into membranes. Localizes to the completed autophagosome membrane upon cell starvation (PubMed:23217709).
<b>Tissue Specificity</b>	
<b>Function</b>	function:Implicated in vesicle trafficking to lysosomes. Could be involved in processes related to cell division.,similarity:Belongs to the syntaxin family.,similarity:Contains 1 t-SNARE coiled-coil homology domain.,subcellular location:Appears to be associated with a membrane compartment, perhaps a subset of the ER such as exit or entrance sites.,

**Nanjing BYabscience technology Co.,Ltd**



## Background

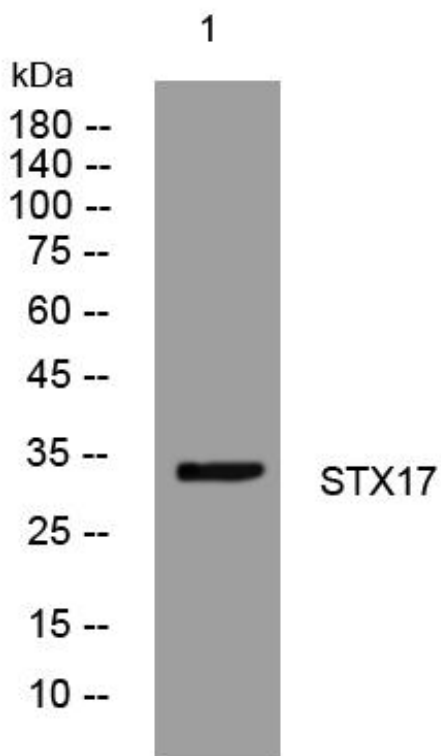
### matters needing attention

Avoid repeated freezing and thawing!

### Usage suggestions

This product can be used in immunological reaction related experiments. For more information, please consult technical personnel.

## Products Images



Western Blot analysis of various cells using STX17 mouse mAb

Nanjing BYabscience technology Co.,Ltd

网址: [www.njbybio.com](http://www.njbybio.com)

官方热线: 025-5229-8998

监督电话: 15950492658