



S36A1 mouse mAb

Catalog No	BYmab-09021
Isotype	IgG
Reactivity	Human; Mouse;Rat
Applications	WB
Gene Name	SLC36A1 PAT1
Protein Name	S36A1
Immunogen	Synthesized peptide derived from human S36A1 AA range: 176-226
Specificity	This antibody detects endogenous levels of S36A1 at Human/Mouse/Rat
Formulation	Liquid in PBS containing 50% glycerol, 0.5% BSA and 0.02% sodium azide.
Source	Monoclonal, Mouse,IgG
Purification	The antibody was affinity-purified from mouse antiserum by affinity-chromatography using epitope-specific immunogen.
Dilution	WB 1:500-2000
Concentration	1 mg/ml
Purity	≥90%
Storage Stability	-20°C/1 year
Synonyms	
Observed Band	
Cell Pathway	Cell membrane ; Multi-pass membrane protein . Lysosome membrane ; Multi-pass membrane protein . In neurons, colocalizes with the exocyst complex in the axonal processes. .
Tissue Specificity	
Function	function:Neutral amino acid/proton symporter. Has a pH-dependent electrogenic transport activity for small amino acids such as glycine, alanine and proline. Besides small apolar L-amino acids, it also recognize their D-enantiomers and selected amino acid derivatives such as gamma-aminobutyric acid.,similarity:Belongs to the amino acid/polyamine transporter 2 family.,
Background	This gene encodes a member of the eukaryote-specific amino acid/auxin permease (AAP) 1 transporter family. The encoded protein functions as a proton-dependent, small amino acid transporter. This gene is clustered with related family members on chromosome 5q33.1. Alternative splicing results in multiple transcript variants. [provided by RefSeq, Apr 2015],

Nanjing BYabscience technology Co.,Ltd



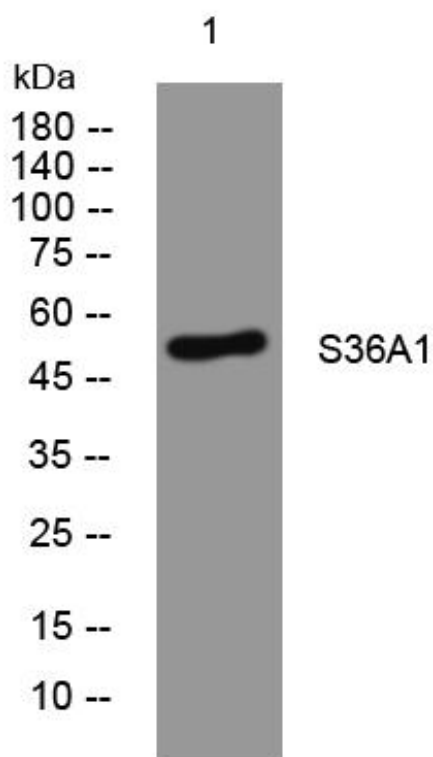
matters needing attention

Avoid repeated freezing and thawing!

Usage suggestions

This product can be used in immunological reaction related experiments. For more information, please consult technical personnel.

Products Images



Western Blot analysis of various cells using S36A1 mouse mAb