



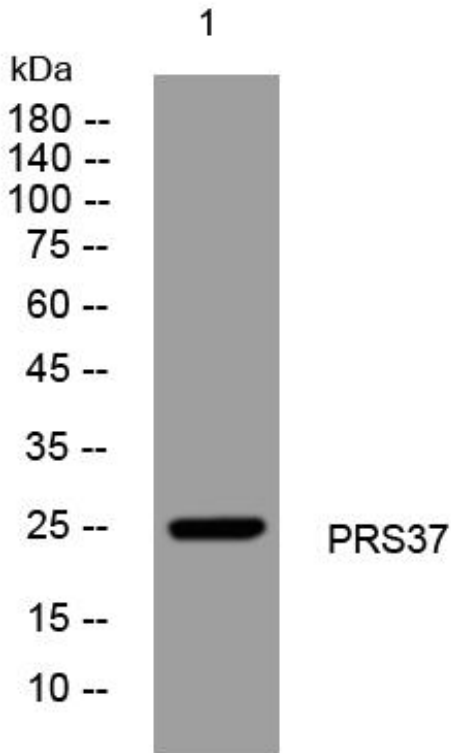
# PRS37 mouse mAb

Catalog No	BYmab-09020
Isotype	IgG
Reactivity	Human; Mouse
Applications	WB
Gene Name	PRSS37 TRYX2
Protein Name	PRS37
Immunogen	Synthesized peptide derived from human PRS37 AA range: 30-80
Specificity	This antibody detects endogenous levels of PRS37 at Human/Mouse
Formulation	Liquid in PBS containing 50% glycerol, 0.5% BSA and 0.02% sodium azide.
Source	Monoclonal, Mouse,IgG
Purification	The antibody was affinity-purified from mouse antiserum by affinity-chromatography using epitope-specific immunogen.
Dilution	WB 1:500-2000
Concentration	1 mg/ml
Purity	≥90%
Storage Stability	-20°C/1 year
Synonyms	
Observed Band	
Cell Pathway	Cytoplasmic vesicle, secretory vesicle, acrosome . Secreted .
Tissue Specificity	Testis-specific (PubMed:27649891). Expressed in spermatids (at protein level) (PubMed:27649891).
Function	
Background	
matters needing attention	Avoid repeated freezing and thawing!
Usage suggestions	This product can be used in immunological reaction related experiments. For more information, please consult technical personnel.

Nanjing BYabscience technology Co.,Ltd



## Products Images



Western Blot analysis of various cells using PRS37 mouse mAb