



TSG10 mouse mAb

Catalog No	BYmab-09017
Isotype	IgG
Reactivity	Human; Mouse;Rat
Applications	WB
Gene Name	TSGA10 CEP4L
Protein Name	TSG10
Immunogen	Synthesized peptide derived from human TSG10 AA range: 412-462
Specificity	This antibody detects endogenous levels of TSG10 at Human/Mouse/Rat
Formulation	Liquid in PBS containing 50% glycerol, 0.5% BSA and 0.02% sodium azide.
Source	Monoclonal, Mouse,IgG
Purification	The antibody was affinity-purified from mouse antiserum by affinity-chromatography using epitope-specific immunogen.
Dilution	WB 1:500-2000
Concentration	1 mg/ml
Purity	≥90%
Storage Stability	-20°C/1 year
Synonyms	
Observed Band	
Cell Pathway	Cytoplasm . Cytoplasm, cytoskeleton, microtubule organizing center, centrosome, centriole . In mature spermatozoa, localizes to the centriole and midpiece (PubMed:28905369). The 27-kDa peptide associates with the fibrous sheath in mature spermatozoa and localizes to the principal piece of sperm tail, while the 55-kDa peptide localizes to the midpiece (By similarity). Detected in the cytoplasm of almost all spermatogonial cells within the seminiferous tubules (By similarity). .
Tissue Specificity	Expressed in the testis, in spermatozoa (at protein level) (PubMed:11179690, PubMed:28905369). Expressed in actively dividing fetal tissues, including sternum, intestine, limb, kidney and stomach (PubMed:14585816).
Function	function:May play a role in the sperm tail fibrous sheath, a major sperm tail structure.,PTM:Appears to be processed in a 27 kDa and a 55 kDa peptide containing respectively the N-terminal and the C-terminal part of the precursor.,similarity:Belongs to the CEP135/TSGA10 family.,subcellular location:The 27 kDa peptide associates with the fibrous sheath in mature spermatozoa and localizes to the principal piece of sperm tail while the 55 kDa

Nanjing BYabscience technology Co.,Ltd



peptide localizes to the midpiece.,tissue specificity:Testis specific.,

Background

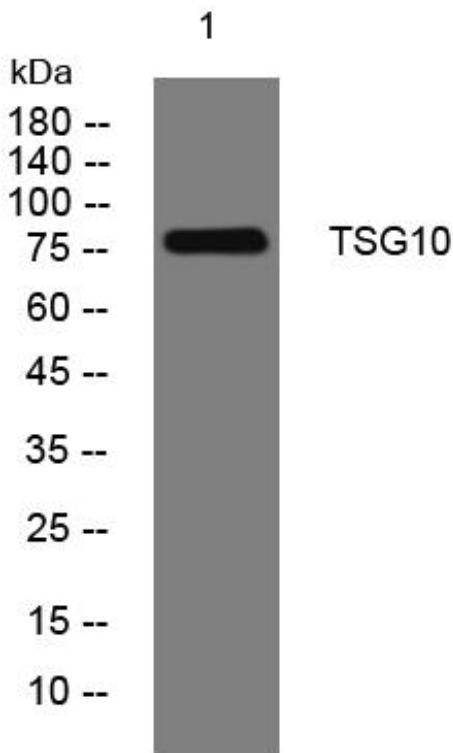
matters needing attention

Avoid repeated freezing and thawing!

Usage suggestions

This product can be used in immunological reaction related experiments. For more information, please consult technical personnel.

Products Images



Western Blot analysis of various cells using TSG10 mouse mAb

Nanjing BYabscience technology Co.,Ltd

网址: www.njbybio.com

官方热线: 025-5229-8998

监督电话: 15950492658