



RASF9 mouse mAb

Catalog No	BYmab-09014
Isotype	IgG
Reactivity	Human; Mouse;Rat
Applications	WB
Gene Name	RASSF9 PAMCI PCIP1
Protein Name	RASF9
Immunogen	Synthesized peptide derived from human RASF9 AA range: 370-420
Specificity	This antibody detects endogenous levels of RASF9 at Human/Mouse/Rat
Formulation	Liquid in PBS containing 50% glycerol, 0.5% BSA and 0.02% sodium azide.
Source	Monoclonal, Mouse,IgG
Purification	The antibody was affinity-purified from mouse antiserum by affinity-chromatography using epitope-specific immunogen.
Dilution	WB 1:500-2000
Concentration	1 mg/ml
Purity	≥90%
Storage Stability	-20°C/1 year
Synonyms	
Observed Band	
Cell Pathway	Endosome. Accumulates on perinuclear endosomes. .
Tissue Specificity	
Function	function:May play a role in regulating vesicular trafficking in cells.,similarity:Contains 1 Ras-associating domain.,subcellular location:Accumulates on perinuclear endosomes.,subunit:Interacts with PAM.,
Background	The protein encoded by this gene localizes to perinuclear endosomes. This protein associates with peptidylglycine alpha-amidating monooxygenase, and may be involved with the trafficking of this enzyme through secretory or endosomal pathways. [provided by RefSeq, Jul 2008],
matters needing attention	Avoid repeated freezing and thawing!

Nanjing BYabscience technology Co.,Ltd

网址: www.njbybio.com

官方热线: 025-5229-8998

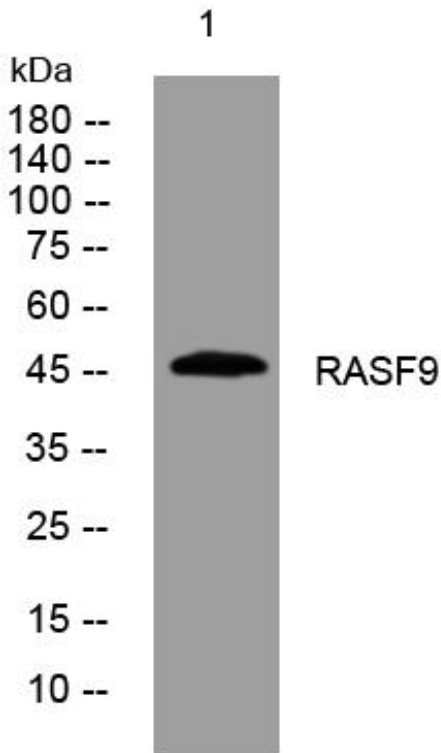
监督电话: 15950492658



Usage suggestions

This product can be used in immunological reaction related experiments. For more information, please consult technical personnel.

Products Images



Western Blot analysis of various cells using RASF9 mouse mAb

Nanjing BYabscience technology Co.,Ltd

网址: www.njbybio.com

官方热线: 025-5229-8998

监督电话: 15950492658