



# KRA59 mouse mAb

Catalog No	BYmab-09013
Isotype	IgG
Reactivity	Human;Rat;Mouse;
Applications	WB
Gene Name	KRTAP5-9 KAP5.9 KRN1 KRTAP5.9 UHSK1
Protein Name	KRA59
Immunogen	Synthesized peptide derived from human KRA59 AA range: 9-59
Specificity	This antibody detects endogenous levels of KRA59 at Human
Formulation	Liquid in PBS containing 50% glycerol, 0.5% BSA and 0.02% sodium azide.
Source	Monoclonal, Mouse,IgG
Purification	The antibody was affinity-purified from mouse antiserum by affinity-chromatography using epitope-specific immunogen.
Dilution	WB 1:500-2000
Concentration	1 mg/ml
Purity	≥90%
Storage Stability	-20°C/1 year
Synonyms	
Observed Band	
Cell Pathway	keratin filament,
Tissue Specificity	Restricted to hair root, not detected in any other tissues. Expressed in cuticle layers of differentiating hair follicles.
Function	developmental stage:At a late stage of fiber differentiation.,function:In the hair cortex, hair keratin intermediate filaments are embedded in an interfilamentous matrix, consisting of hair keratin-associated protein (KRTAP), which are essential for the formation of a rigid and resistant hair shaft through their extensive disulfide bond cross-linking with abundant cysteine residues of hair keratins. The matrix proteins include the high-sulfur and high-glycine-tyrosine keratins.,similarity:Belongs to the KRTAP type 5 family.,subunit:Interacts with hair keratins.,tissue specificity:Restricted to hair root, not detected in any other tissues. Expressed in cuticle layers of differentiating hair follicles.,
Background	

Nanjing BYabscience technology Co.,Ltd

网址: [www.njbybio.com](http://www.njbybio.com)

官方热线: 025-5229-8998

监督电话: 15950492658



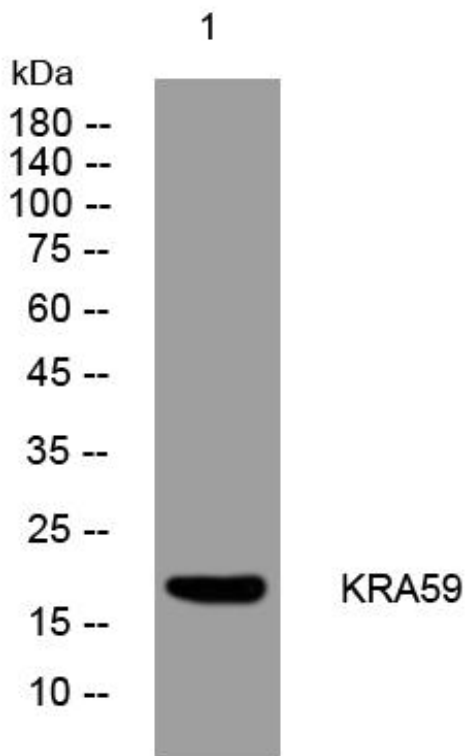
**matters needing attention**

Avoid repeated freezing and thawing!

**Usage suggestions**

This product can be used in immunological reaction related experiments. For more information, please consult technical personnel.

## Products Images



Western Blot analysis of various cells using KRA59 mouse mAb