



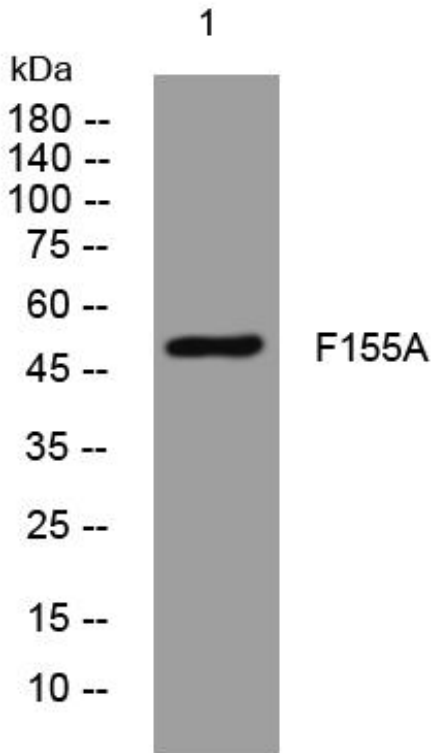
# F155A mouse mAb

Catalog No	BYmab-09011
Isotype	IgG
Reactivity	Human; Mouse
Applications	WB
Gene Name	FAM155A
Protein Name	F155A
Immunogen	Synthesized peptide derived from human F155A AA range: 321-371
Specificity	This antibody detects endogenous levels of F155A at Human/Mouse
Formulation	Liquid in PBS containing 50% glycerol, 0.5% BSA and 0.02% sodium azide.
Source	Monoclonal, Mouse,IgG
Purification	The antibody was affinity-purified from mouse antiserum by affinity-chromatography using epitope-specific immunogen.
Dilution	WB 1:500-2000
Concentration	1 mg/ml
Purity	≥90%
Storage Stability	-20°C/1 year
Synonyms	
Observed Band	
Cell Pathway	Cell membrane ; Multi-pass membrane protein .
Tissue Specificity	
Function	similarity:Belongs to the FAM155 family.,
Background	
matters needing attention	Avoid repeated freezing and thawing!
Usage suggestions	This product can be used in immunological reaction related experiments. For more information, please consult technical personnel.

Nanjing BYabscience technology Co.,Ltd



## Products Images



Western Blot analysis of various cells using F155A mouse mAb

Nanjing BYabs science technology Co.,Ltd

网址: [www.njbybio.com](http://www.njbybio.com)

官方热线: 025-5229-8998

监督电话: 15950492658