



# NEPR1 mouse mAb

Catalog No	BYmab-08998
Isotype	IgG
Reactivity	Human; Mouse
Applications	WB
Gene Name	CNEP1R1 C16orf69 TMEM188
Protein Name	NEPR1
Immunogen	Synthesized peptide derived from human NEPR1 AA range: 25-75
Specificity	This antibody detects endogenous levels of NEPR1 at Human/Mouse
Formulation	Liquid in PBS containing 50% glycerol, 0.5% BSA and 0.02% sodium azide.
Source	Monoclonal, Mouse,IgG
Purification	The antibody was affinity-purified from mouse antiserum by affinity-chromatography using epitope-specific immunogen.
Dilution	WB 1:500-2000
Concentration	1 mg/ml
Purity	≥90%
Storage Stability	-20°C/1 year
Synonyms	
Observed Band	
Cell Pathway	Nucleus membrane ; Multi-pass membrane protein . Cytoplasm . Filamentous pattern in the cytoplasm.
Tissue Specificity	Muscle specific with lower expression in other metabolic tissues.
Function	similarity:Belongs to the UPF0427 family.,
Background	This gene encodes a transmembrane protein that belongs to the Tmem18A family. A similar protein in yeast is a component of an endoplasmic reticulum-associated protein phosphatase complex and is thought to play a role in the synthesis of triacylglycerol. Alternate splicing results in multiple transcript variants. [provided by RefSeq, Aug 2013],
matters needing attention	Avoid repeated freezing and thawing!

Nanjing BYabscience technology Co.,Ltd

网址: [www.njbybio.com](http://www.njbybio.com)

官方热线: 025-5229-8998

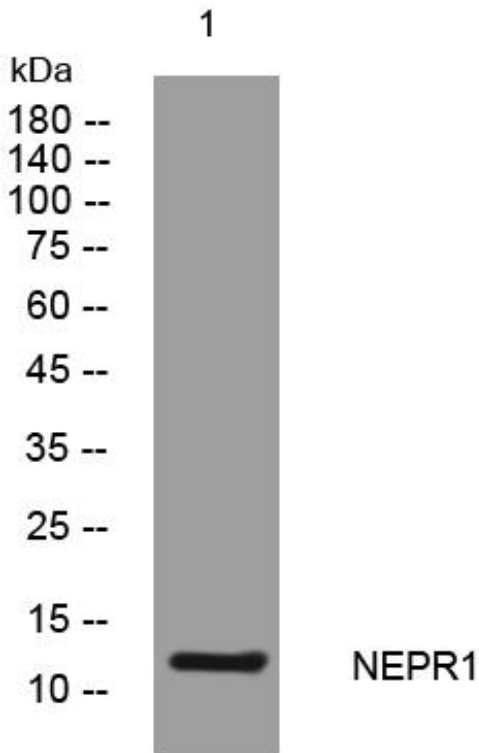
监督电话: 15950492658



### Usage suggestions

This product can be used in immunological reaction related experiments. For more information, please consult technical personnel.

## Products Images



Western Blot analysis of various cells using NEPR1 mouse mAb

Nanjing BYabscience technology Co.,Ltd

网址: [www.njbybio.com](http://www.njbybio.com)

官方热线: 025-5229-8998

监督电话: 15950492658